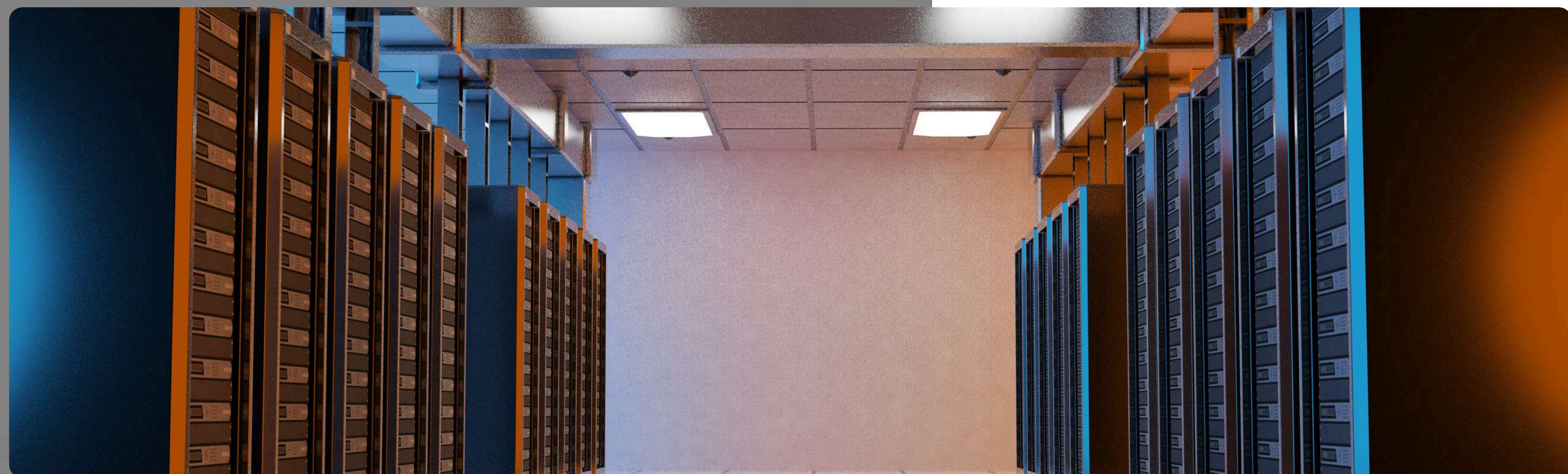
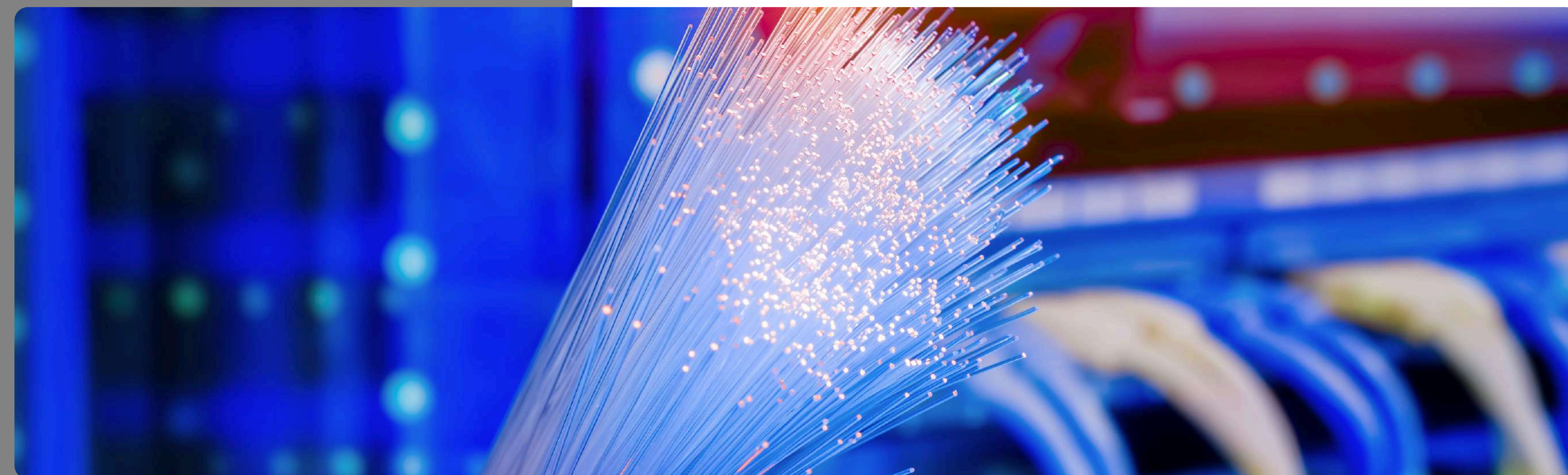
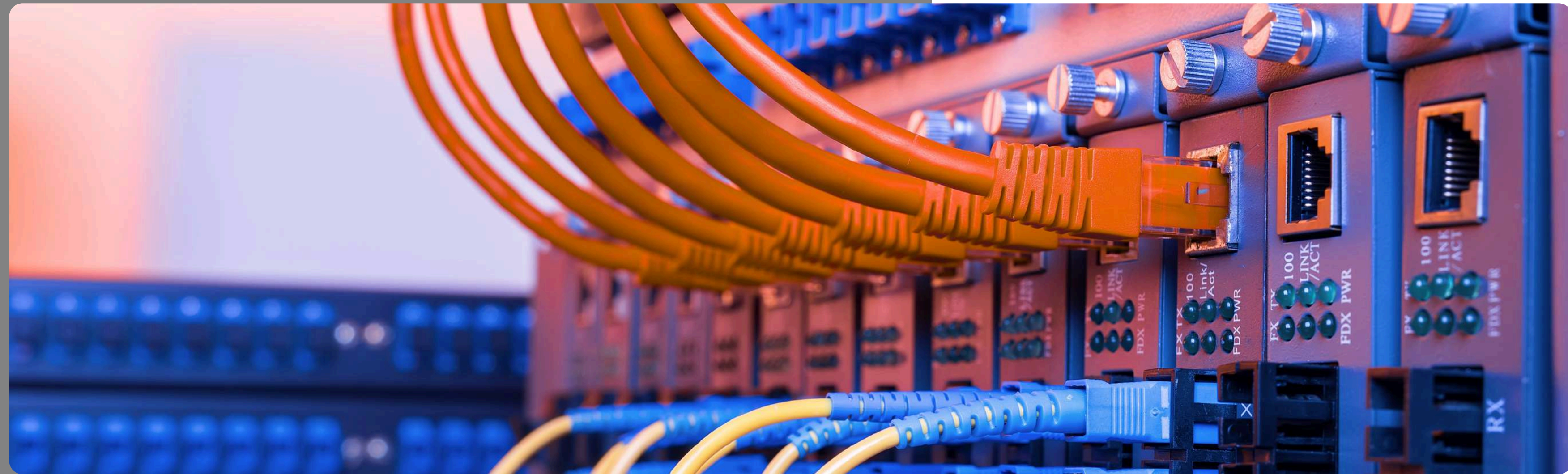




Catalog

Structured Cabling



WELCOME

We are pleased to introduce our latest catalog, thoughtfully crafted to provide comprehensive and accessible information on structured cabling solutions. Designed for ease of use, this catalog features intuitive sections that guide you in selecting the ideal products to meet your cabling needs, whether for data centers, offices, or industrial environments.

At **AXYS Connect**, our dedication to innovation and a customer-focused approach drives us to develop high-performance networking and smart home solutions that keep pace with the fast-evolving market. We continually expand our offerings to meet the diverse needs of our clients.

For the latest updates on new products and enhancements to our existing range, we invite you to visit our website at www.axys-connect.com. Thank you for choosing **AXYS Connect**, where your connectivity needs are our priority.



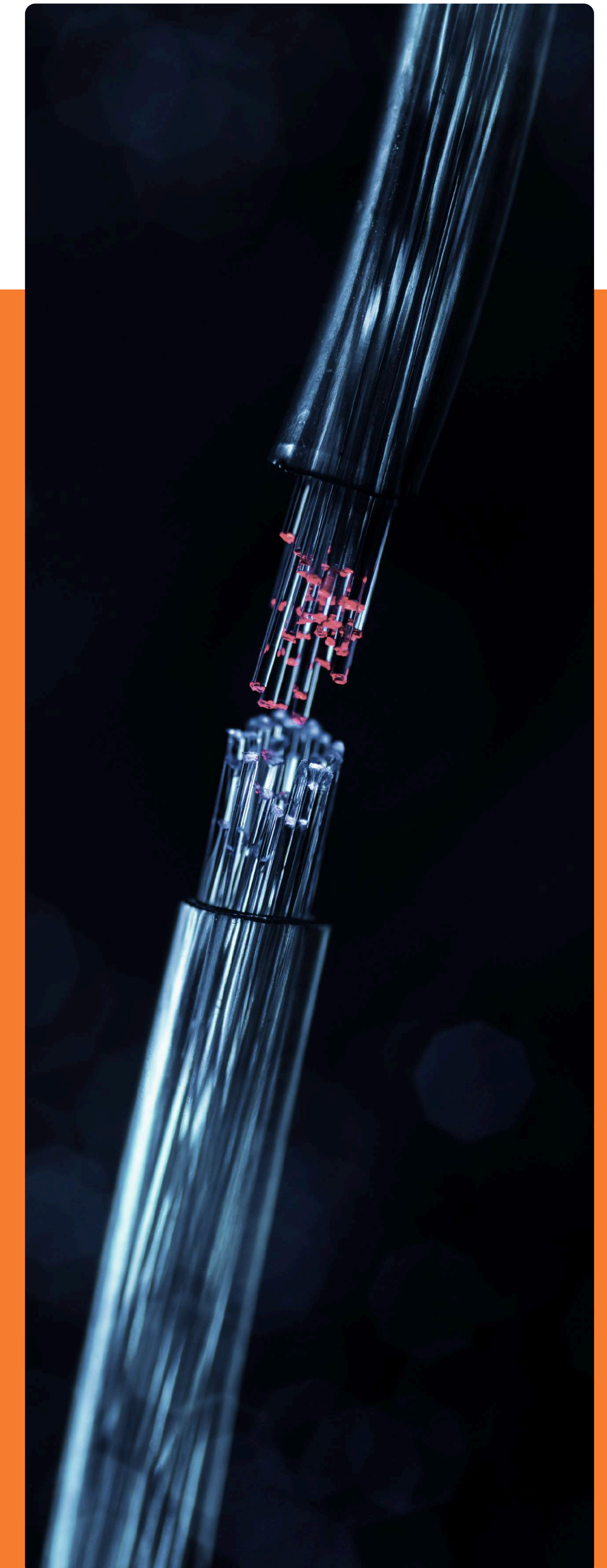


ABOUT US

AXYS Connect is a premier brand that delivers comprehensive, end-to-end solutions for connectivity and security across various sectors. We are committed to enhancing the technological landscape by providing robust, reliable, and innovative infrastructure solutions tailored to meet the evolving needs of our customers.

Our product portfolio includes a diverse range of offerings such as high-quality copper cables, patch cords, patch panels, fiber optic products like pigtails (both multimode and singlemode), and an extensive selection of network racks, switches, and accessories. These products are designed to ensure seamless, high-performance connectivity, whether for residential, commercial, or industrial applications.

Our dedication to excellence extends beyond manufacturing. We collaborate with the best system integrators and distributors in the industry, ensuring that our solutions are installed with precision and adhere to the highest standards of quality and performance. This strategic partnership model enables us to maintain superior quality control, resulting in installations that are not only reliable but also optimized for long-term performance.





STRUCTURED CABLING

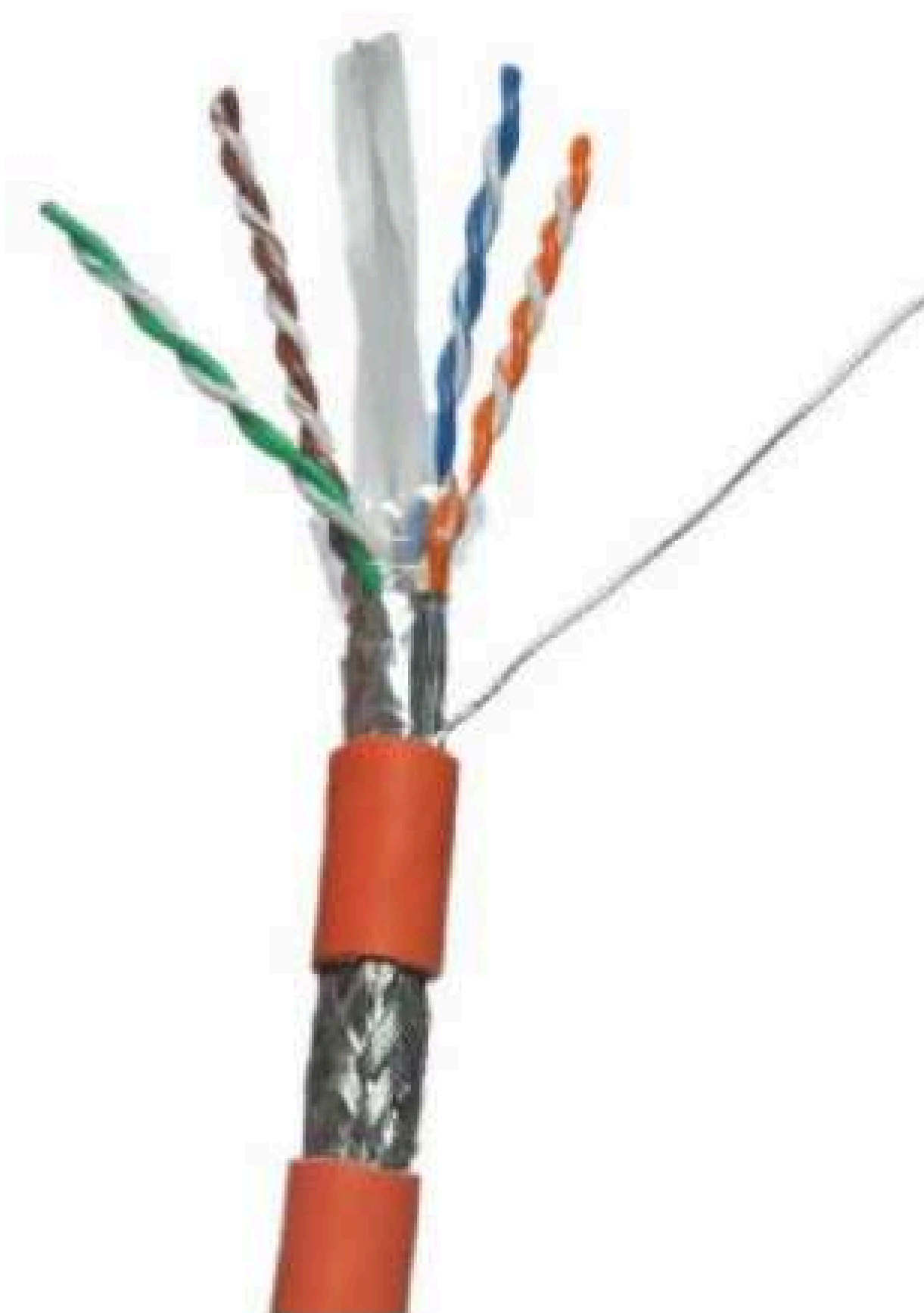
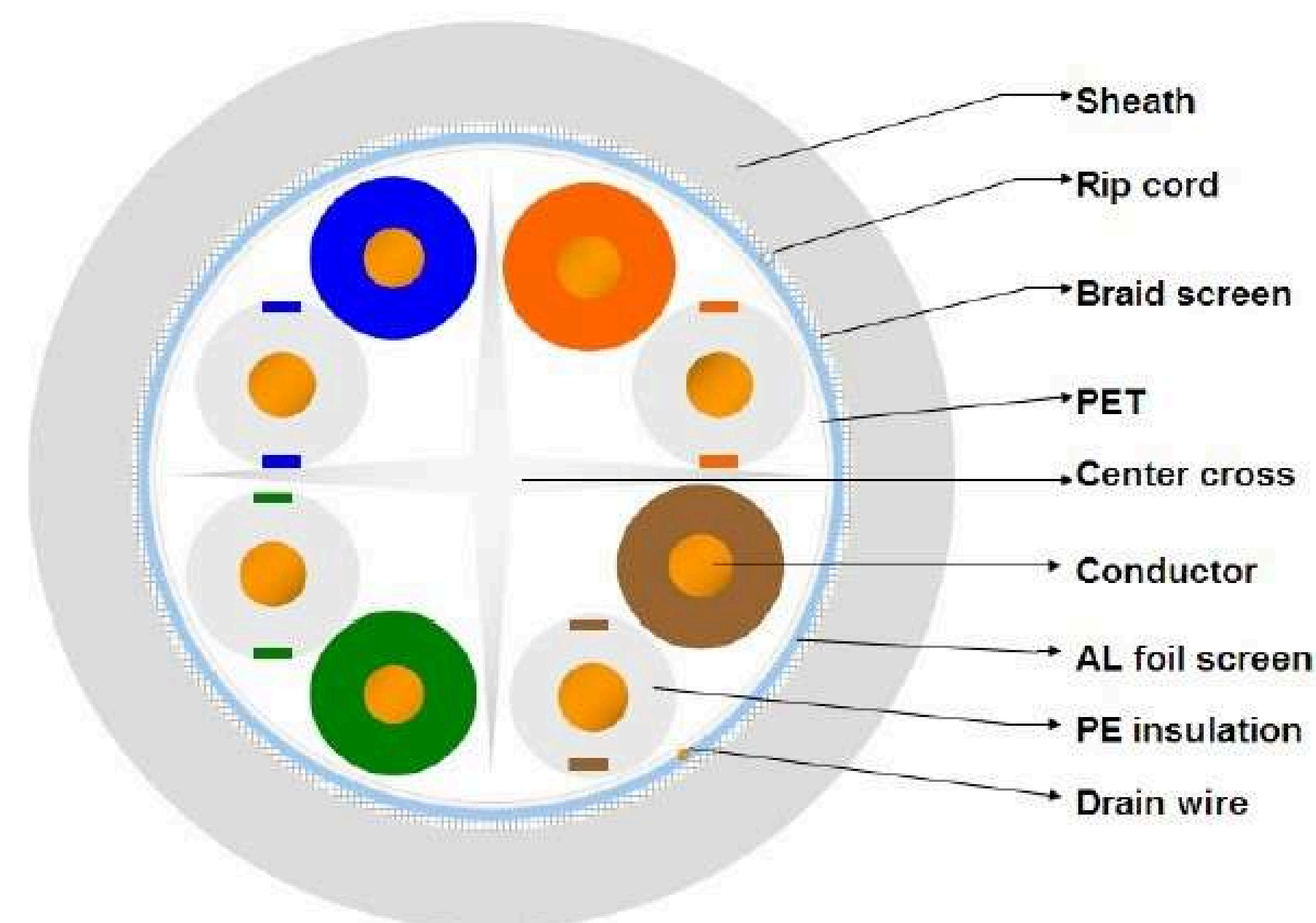
Robust and scalable cabling solutions to keep your communication networks running smoothly and ready for future upgrades, seamlessly integrating with existing systems to ensure reliable connectivity.

CONTENTS

Structured Cabling

CAT 6	01
CAT 6 Solutions	11





TDS – CAT6 SFTP COPPER 23AWG

PART NO: AX-CAT6-23AWG-SFTP

Construction

Conductor	Solid Bare Copper & Conductor Dia.: 0.57 ± 0.003mm
Insulation	Raw material of the insulation: PE
4 twisted pairs	Blue/white-blue; Green / white-green; Orange / white-orange; Brown / white-brown; Insulation Dia.: 1.18 ± 0.005mm
Average thickness	0.3025mm
Minimum point thickness	0.30mm
Divider	Center cross
Separator	PET
Drain Wire	0.4mm drain wire
Inner Screen	AL foil (good)
Outer Screen	96/0.12mm AL-MG braiding wire
Rip Cord	Nylon thread
Jacket	Jacket Material: PVC Color: Grey Nominal Dia.: 7.7 ± 0.2mm Average thickness: 0.65mm Minimum point thickness: 0.50mm

Application

Primary(Campus), Secondary(Riser), Tertiary(Horizontal), IEEE802.3: 10 Base-T ; 100 Base-T ; 1000 Base-t, IEEE802.5 16MB ; RDSI/ISDN; 100 Mbps TPDDI; 155 Mbps ATM

Standards

TIA/EIA 568.B	EN50173-1
IEC/ISO11801	EN50288-6-1

Electrical Properties

Resistance unbalance	≤ 2%
Loop impedance	≥90 MΩ/km
Capacitance	230pF/m
Capacitance unbalance	≤330 pF/100m
Characteristic impedance	1-100Mhz: (100±15) Ω
Nominal velocity of propagation	≥Approximate 62%
Propagation delay	≤537 ns/100m @ 100mhz
Delay skew	Nominal 45 ns/100m, 1-250 Mhz
Test voltage (DC, 1 min)	1000v

Packing

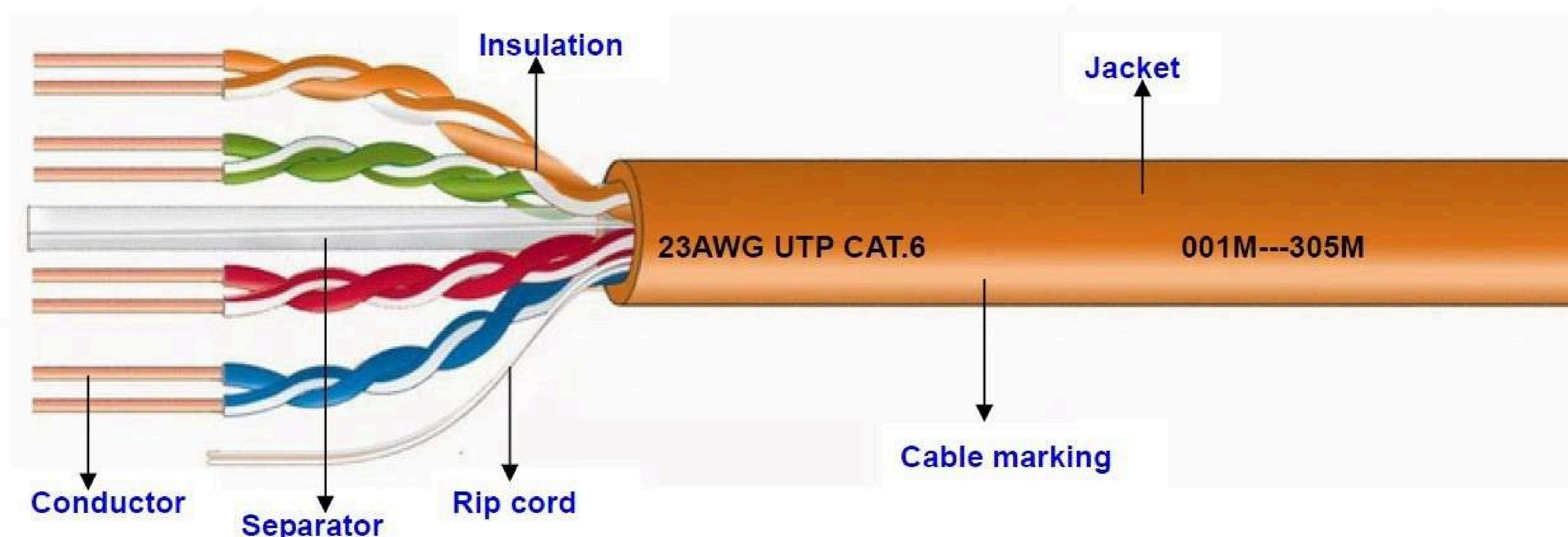
305 Meter Drum/Wood Pallet

Mechanical Properties

Minimum Bending Radius	Installation: 8×O.D. Installed: 4×O.D.
Temperature Range	During operation: -55°C -- +60°C During installation: -15°C -- +50°C
Max Tensile Load	During operation: --During installation: 120N

Nominal Transmission Characteristics

Material		NO AGING		AGED	
		Elongation (%)	Tensile Strength (MPA)	Elongation & Rate of change (%)	Tensile Strength & rate of change (MPA) (%)
Insulation	PP	≤ 300	≥ 20	-	-
	HDPE	≤ 300	≥ 16	-	-
	MDPE	≤ 300	≥ 12	-	-
	SFS-PE	≤ 200	≥ 10	-	-
Jacket	FEP	≤ 200	≥ 16	-	-
	LSZH	≤ 125	≥ 10	≥ 100	-30~+30
	PVC	≤ 150	≥ 13.5	≥ 125	-20~+20
	FP	≤ 250	≥ 20	≥ 200	-20~+20



TDS – CAT6 UTP COPPER 23AWG – LSZH

PART NO: AX-CAT6-23AWG-UTP

Construction

Conductor	Solid Bare Copper & Conductor Dia.: 0.57 ± 0.003mm
Insulation	Raw material of the insulation: PE
4 Twisted Pairs	Blue/white-blue; Green / white-green; Orange / white-orange; Brown / white-brown; Insulation Dia.: 1.02 ± 0.005mm
Average thickness	0.2125mm
Minimum point thickness	0.21mm
Separator	Center cross
Rip Cord	Nylon thread
Jacket	Jacket Material: LSZH (Low Smoke Zero Halogen) Color: Orange Nominal Dia.: 6.3 ± 0.2mm Average thickness: 0.60mm Minimum point thickness: 0.50mm

Application

Primary(Campus), Secondary(Riser), Tertiary(Horizontal)
 IEEE802.3: 10 Base-T ; 100 Base-T ; 1000 Base-t ;
 IEEE802.5 16MB ; RDSI/ISDN; 100 Mbps TPDDI; 155 Mbps ATM

Electrical Properties

Resistance unbalance	≤ 2%
Loop impedance	≥110 MΩ/km
Capacitance	230pF/m
Capacitance unbalance	≤330 pF/100m
Characteristic impedance	1-100Mhz: (100±15) Ω
Nominal velocity of propagation	≥Approximate 62%
Propagation delay	≤537 ns/100m @ 100mhz
Delay skew	Nominal 45 ns/100m, 1-250 Mhz
Test voltage (DC, 1 min)	1000v

Nominal Transmission Characteristics

F (Mhz)	Att (db/100m)	Dop (ns/100m)	Vop (%C)	Skw (ns/100m)	RI (db)	Next (db@100m)	PsNext (db@100m)	Ps EIFext (db@100m)
0.772	≤ 1.88	≤ 574.97	≥57.96	≤45	≥19.5	≥75.98	≥73.98	≥67.04
1	≤2.0	≤570	≥58.5	≤45	≥20	≥74.3	≥72.3	≥64.8
4	≤3.9	≤552	≥60.44	≤45	≥23.1	≥65.26	≥63.26	≥52.75
8	≤5.49	≤546.72	≥61.01	≤45	≥24.6	≥60.75	≥58.75	≥46.73
10	≤6.14	≤545.38	≥61.15	≤45	≥25	≥59.3	≥57.3	≥44.79
16	≤7.8	≤543	≥61.41	≤45	≥25	≥56.23	≥54.23	≥40.71
20	≤8.74	≤542.04	≥61.51	≤45	≥25	≥54.78	≥52.78	≥38.77
25	≤9.81	≤541.2	≥61.61	≤45	≥24.4	≥53.33	≥51.33	≥36.84
31.25	≤11.02	≤540.43	≥61.69	≤45	≥23.7	≥51.87	≥49.87	≥34.9
50	≤14.1	≤539.09	≥61.83	≤45	≥22.3	≥48.81	≥46.81	≥30.82
62.25	≤15.87	≤538.55	≥61.89	≤45	≥21.6	≥47.36	≥45.36	≥28.88
100	≤20.42	≤537.6	≥62	≤45	≥20.1	≥44.3	≥42.39	≥24.79
125	≤23.05	≤537.21	≥62.05	≤45	≥19.5	≥42.84	≥40.84	≥22.86
200	≤29.85	≤536.54	≥62.12	≤45	≥18	≥39.78	≥37.78	≥18.77
250	≤33.82	≤536.27	≥62.15	≤45	≥17.4	≥38.33	≥36.33	≥16.84

Standards

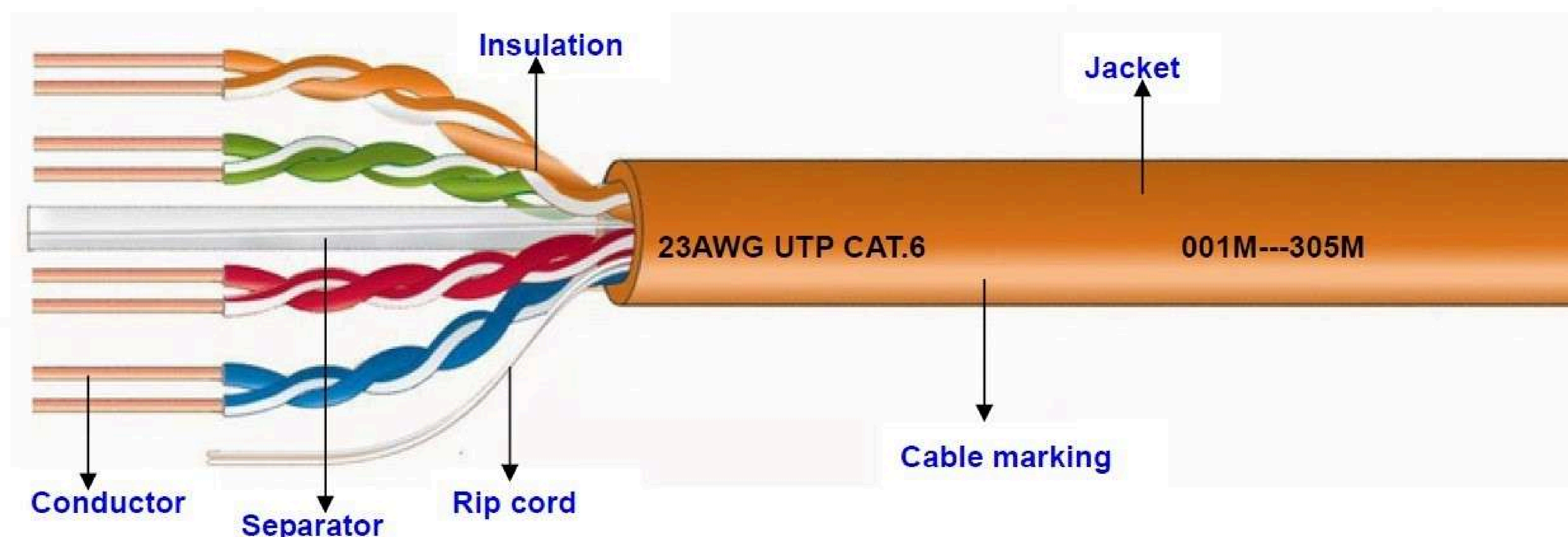
TIA/EIA 568.B	EN50173-1
IEC/ISO11801	EN50288-6-1

Packing

305 Meter Pull Box

Mechanical Properties

Minimum Bending Radius	Installation: 8×O.D. Installed: 4×O.D.
Temperature Range	During operation: -55°C -- +60°C During installation: -15°C -- +50°C
Max Tensile Load	During operation: -- During installation: 110N



TDS – CAT6 UTP COPPER 23AWG – LSZH

PART NO: AXYS-CAT6-03

Construction

Conductor	Solid Bare Copper & Conductor Dia.: 0.57 ± 0.003mm
Insulation	Raw material of the insulation: PE 4 Twisted Pairs : Blue/white-blue; Green / white-green; Orange/white-orange; Brown / white-brown; Insulation Dia. : 1.02 ± 0.005mm Average thickness: 0.2125mm Minimum point thickness: 0.21mm
Separator	Center cross
Rip Cord	Nylon thread
Jacket	Jacket Material : PVC Color : Sky Blue Nominal Dia. : 6.3 ± 0.2mm Average thickness : 0.60mm Minimum point thickness : 0.50mm

Application

Primary(Campus), Secondary(Riser), Tertiary(Horizontal)
 IEEE802.3: 10 Base-T ; 100 Base-T ; 1000 Base-t ;
 IEEE802.5 16MB ; RDSI/ISDN; 100 Mbps TPDDI; 155 Mbps ATM

Electrical Properties

Resistance unbalance	≤ 2%
Loop impedance	≥110 MΩ/km
Capacitance	230pF/m
Capacitance unbalance	≤330 pF/100m
Characteristic impedance	1-100Mhz: (100±15) Ω
Nominal velocity of propagation	≥Approximate 62%
Propagation delay	≤537 ns/100m @ 100mhz
Delay skew	Nominal 45 ns/100m, 1-250 Mhz
Test voltage (DC, 1 min)	1000v

Nominal Transmission Characteristics

F (Mhz)	Att (db/100m)	Dop (ns/100m)	Vop (%C)	Skw (ns/100m)	RI (db)	Next (db@100m)	PsNext (db@100m)	Ps EIFext (db@100m)
0.772	≤ 1.88	≤ 574.97	≥57.96	≤45	≥19.5	≥75.98	≥73.98	≥67.04
1	≤2.0	≤570	≥58.5	≤45	≥20	≥74.3	≥72.3	≥64.8
4	≤3.9	≤552	≥60.44	≤45	≥23.1	≥65.26	≥63.26	≥52.75
8	≤5.49	≤546.72	≥61.01	≤45	≥24.6	≥60.75	≥58.75	≥46.73
10	≤6.14	≤545.38	≥61.15	≤45	≥25	≥59.3	≥57.3	≥44.79
16	≤7.8	≤543	≥61.41	≤45	≥25	≥56.23	≥54.23	≥40.71
20	≤8.74	≤542.04	≥61.51	≤45	≥25	≥54.78	≥52.78	≥38.77
25	≤9.81	≤541.2	≥61.61	≤45	≥24.4	≥53.33	≥51.33	≥36.84
31.25	≤11.02	≤540.43	≥61.69	≤45	≥23.7	≥51.87	≥49.87	≥34.9
50	≤14.1	≤539.09	≥61.83	≤45	≥22.3	≥48.81	≥46.81	≥30.82
62.25	≤15.87	≤538.55	≥61.89	≤45	≥21.6	≥47.36	≥45.36	≥28.88
100	≤20.42	≤537.6	≥62	≤45	≥20.1	≥44.3	≥42.39	≥24.79
125	≤23.05	≤537.21	≥62.05	≤45	≥19.5	≥42.84	≥40.84	≥22.86
200	≤29.85	≤536.54	≥62.12	≤45	≥18	≥39.78	≥37.78	≥18.77
250	≤33.82	≤536.27	≥62.15	≤45	≥17.4	≥38.33	≥36.33	≥16.84

Standards

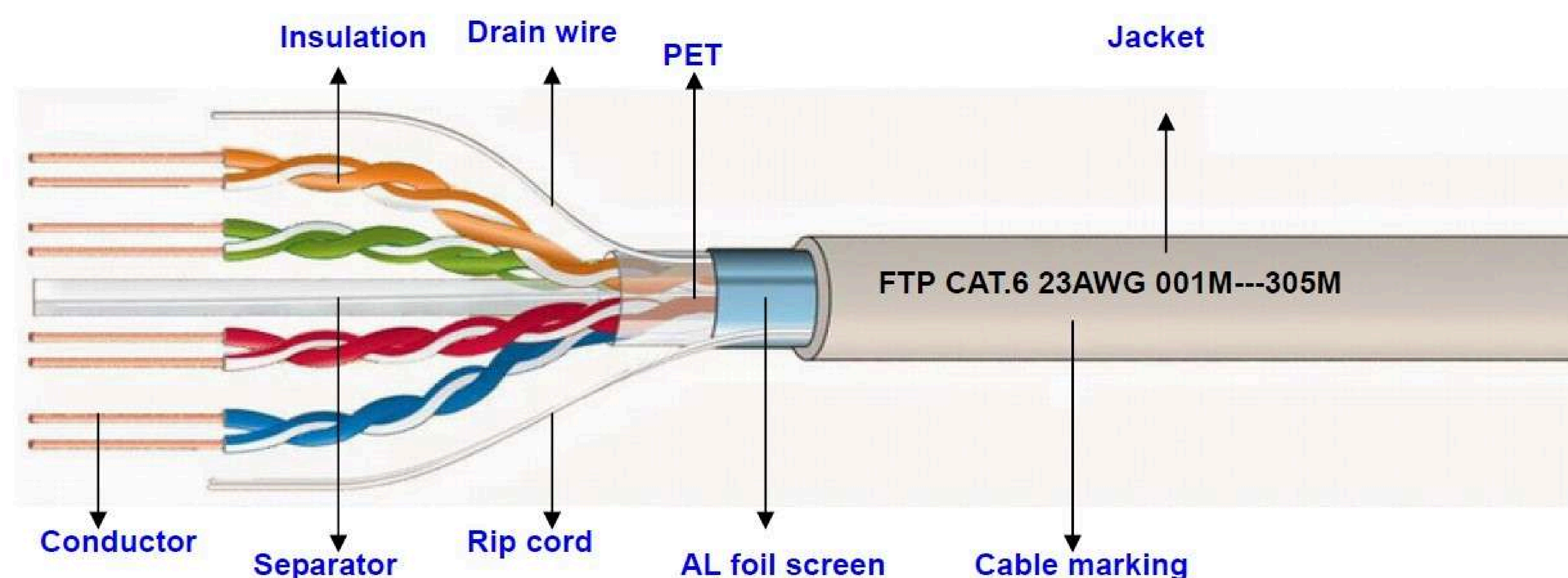
TIA/EIA 568.B	EN50173-1
IEC/ISO11801	EN50288-6-1

Packing

305 Meter Pull Box

Mechanical Properties

Minimum Bending Radius	Installation: 8×O.D. Installed: 4×O.D.
Temperature Range	During operation: -55°C -- +60°C During installation: -15°C -- +50°C
Max Tensile Load	During operation: -- During installation: 110N



TDS – CAT6 FTP COPPER 23AWG

PART NO: AX-CAT6-23AWG-FTP

Construction

Conductor	Solid Bare Copper & Conductor Dia.: 0.57 ± 0.003mm
Insulation	Raw material of the insulation: PE 4 twisted pairs : Blue/white-blue; Green / white-green; Orange / white-orange ; Brown / white-brown; Insulation Dia. : 1.18 ± 0.005mm Average thickness: 0.3025mm Minimum point thickness: 0.30mm
Divider	PP
Separator	PET
Drain Wire	0.4mm drain wire
Outer Screen	Al Foil
Rip Cord	Nylon thread
Jacket	Jacket Material: PVC Color: Grey Nominal Dia.: 7.5 ± 0.2mm Average thickness: 0.60mm Minimum point thickness: 0.50mm

Application

Primary(Campus), Secondary(Riser), Tertiary(Horizontal)
 IEEE802.3: 10 Base-T ; 100 Base-T ; 1000 Base-t ;
 IEEE802.5 16MB ; RDSI/ISDN; 100 Mbps TPDDI; 155 Mbps ATM

Electrical Properties

Resistance unbalance	≤ 2%
Loop impedance	≥90 MΩ/km
Capacitance	230pF/m
Capacitance unbalance	≤330 pF/100m
Characteristic impedance	1-100Mhz: (100±15) Ω
Nominal velocity of propagation	≥Approximate 62%
Propagation delay	≤537 ns/100m @ 100mhz
Delay skew	Nominal 45 ns/100m, 1-250 Mhz
Test voltage (DC, 1 min)	1000v

Nominal Transmission Characteristics

F (Mhz)	Att (db/100m)	Dop (ns/100m)	Vop (%C)	Skw (ns/100m)	RI (db)	Next (db@100m)	PsNext (db@100m)	Ps ElFext (db@100m)
0.772	≤ 1.88	≤ 574.97	≥57.96	≤45	≥19.5	≥75.98	≥73.98	≥67.04
1	≤2.0	≤570	≥58.5	≤45	≥20	≥74.3	≥72.3	≥64.8
4	≤3.9	≤552	≥60.44	≤45	≥23.1	≥65.26	≥63.26	≥52.75
8	≤5.49	≤546.72	≥61.01	≤45	≥24.6	≥60.75	≥58.75	≥46.73
10	≤6.14	≤545.38	≥61.15	≤45	≥25	≥59.3	≥57.3	≥44.79
16	≤7.8	≤543	≥61.41	≤45	≥25	≥56.23	≥54.23	≥40.71
20	≤8.74	≤542.04	≥61.51	≤45	≥25	≥54.78	≥52.78	≥38.77
25	≤9.81	≤541.2	≥61.61	≤45	≥24.4	≥53.33	≥51.33	≥36.84
31.25	≤11.02	≤540.43	≥61.69	≤45	≥23.7	≥51.87	≥49.87	≥34.9
50	≤14.1	≤539.09	≥61.83	≤45	≥22.3	≥48.81	≥46.81	≥30.82
62.25	≤15.87	≤538.55	≥61.89	≤45	≥21.6	≥47.36	≥45.36	≥28.88
100	≤20.42	≤537.6	≥62	≤45	≥20.1	≥44.3	≥42.39	≥24.79
125	≤23.05	≤537.21	≥62.05	≤45	≥19.5	≥42.84	≥40.84	≥22.86
200	≤29.85	≤536.54	≥62.12	≤45	≥18	≥39.78	≥37.78	≥18.77
250	≤33.82	≤536.27	≥62.15	≤45	≥17.4	≥38.33	≥36.33	≥16.84

Standards

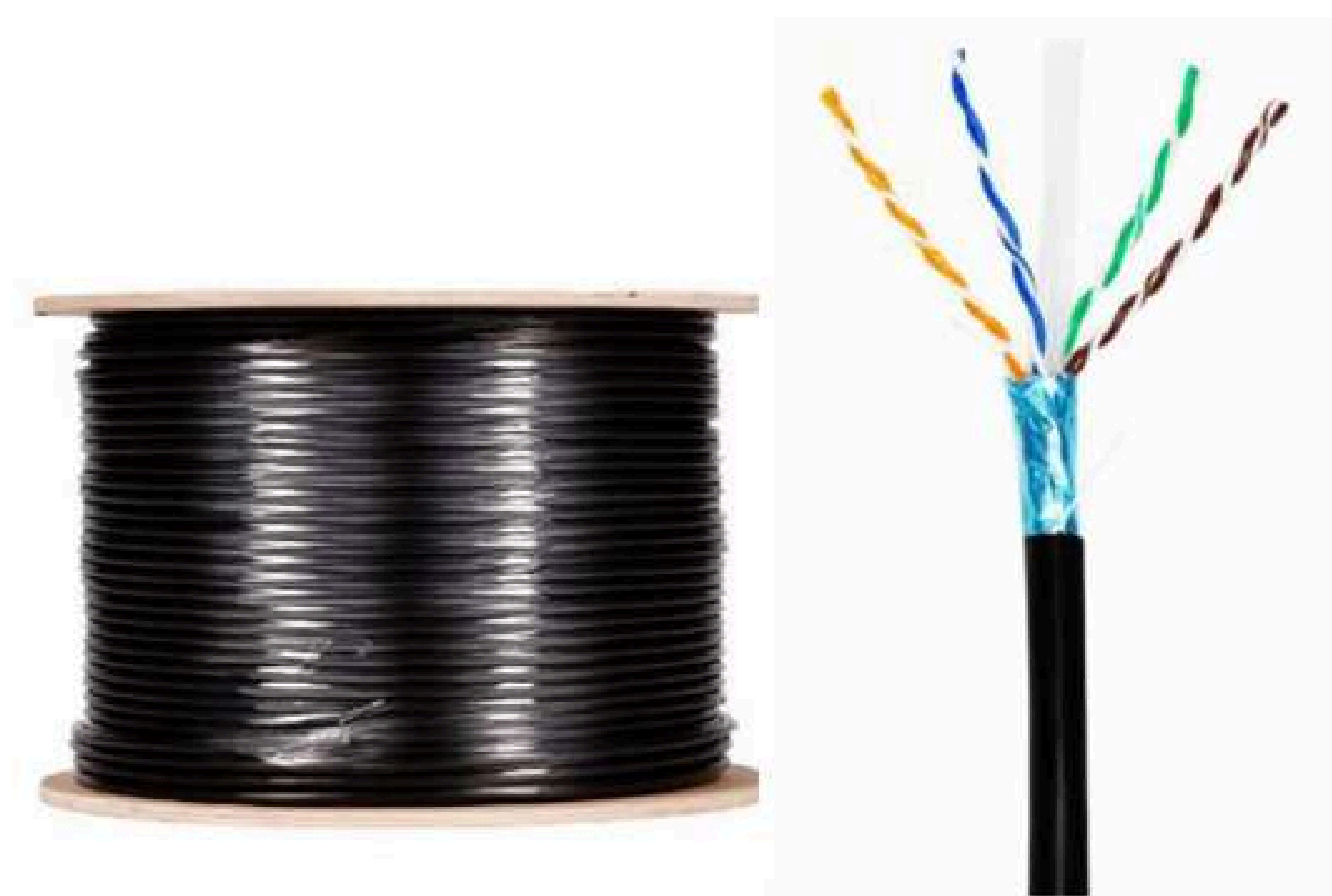
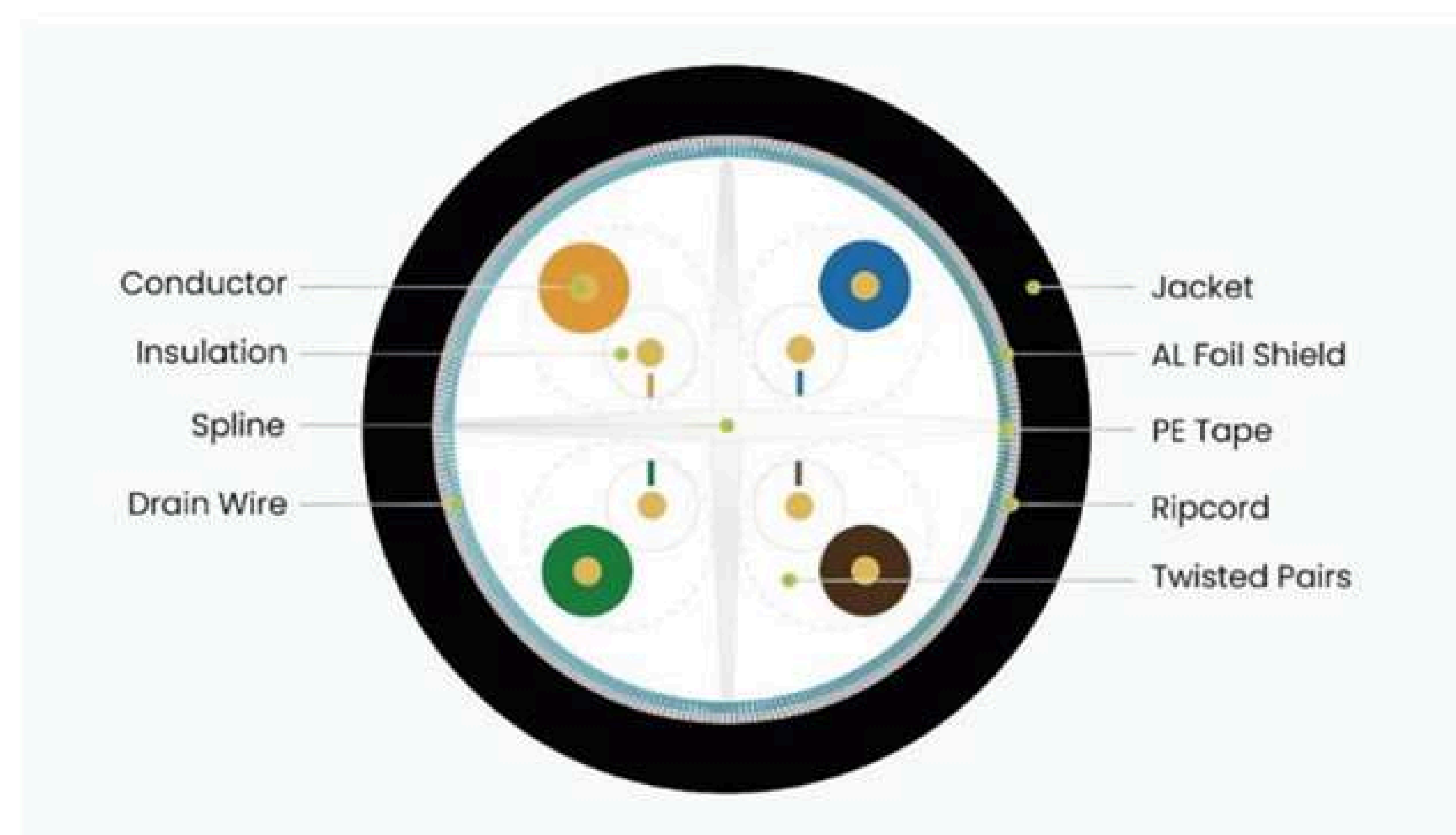
TIA/EIA 568.B	EN50173-1
IEC/ISO11801	EN50288-6-1

Packing

305 Meter Drum/Wood Pallet

Mechanical Properties

Minimum Bending Radius	Installation: 8×O.D. Installed: 4×O.D.
Temperature Range	During operation: -55°C -- +60°C During installation: -15°C -- +50°C
Max Tensile Load	During operation: -- During installation: 120N



CAT-6 4 PAIR F/UTP OUTDOOR

Construction

Conductor	23AWG SOLID COPPER (0.574 mm)
Insulation	HIGH DENSITY POLYETHYLENE
Insulation Diameter	1.02 mm
Pair	4 PAIR - TWO INSULATED CONDUCTOR TWISTED TOGETHER
Pair Color	WHITE/BLUE STRIP-BLUEWHITE/ORANGE STRIP-ORANGEWHITE/GREEN STRIP-GREENWHITE/BROWN STRIP-BROWN
Polyester Tape	WRAPPED OVER THE CORE
Shielding	OVERALL ALUMINIUM FOIL SHIELDED WITH TINNED COPPER DRAIN WIRE
Shielding Details	0.4MM SOLID
Ripcord	1 RIP CORD UNDER THE SHEATH
Sheath/Jacket Material	PE (POLYETHYLENE)
Sheath Thickness	0.55MM NOMINAL
Overall Diameter	7.0 ± 0.5MM

Application

F/UTP Category 6 Cable foil-shielded twisted-pair (F/UTP) network cable is a top quality outdoor F/UTP cable designed for use in professional computer networks outside buildings. The shielding layer made of aluminum foil allows to minimize crosstalk and interference with the external environment. Shielding provides an electrically conductive barrier to attenuate electromagnetic waves external to the shield, and provides a conduction path by which induced currents can be circulated and returned to the source, via ground reference connection.

Standards

Cutting Length	305 METER
Packing	Reel

Printing on outer jacket

AXYS = CAT-6 = 23 AWG = 4PR F/UTP = OUTDOOR = TIA/EIA 568B.2 = YOM = XXXX

Electrical Properties

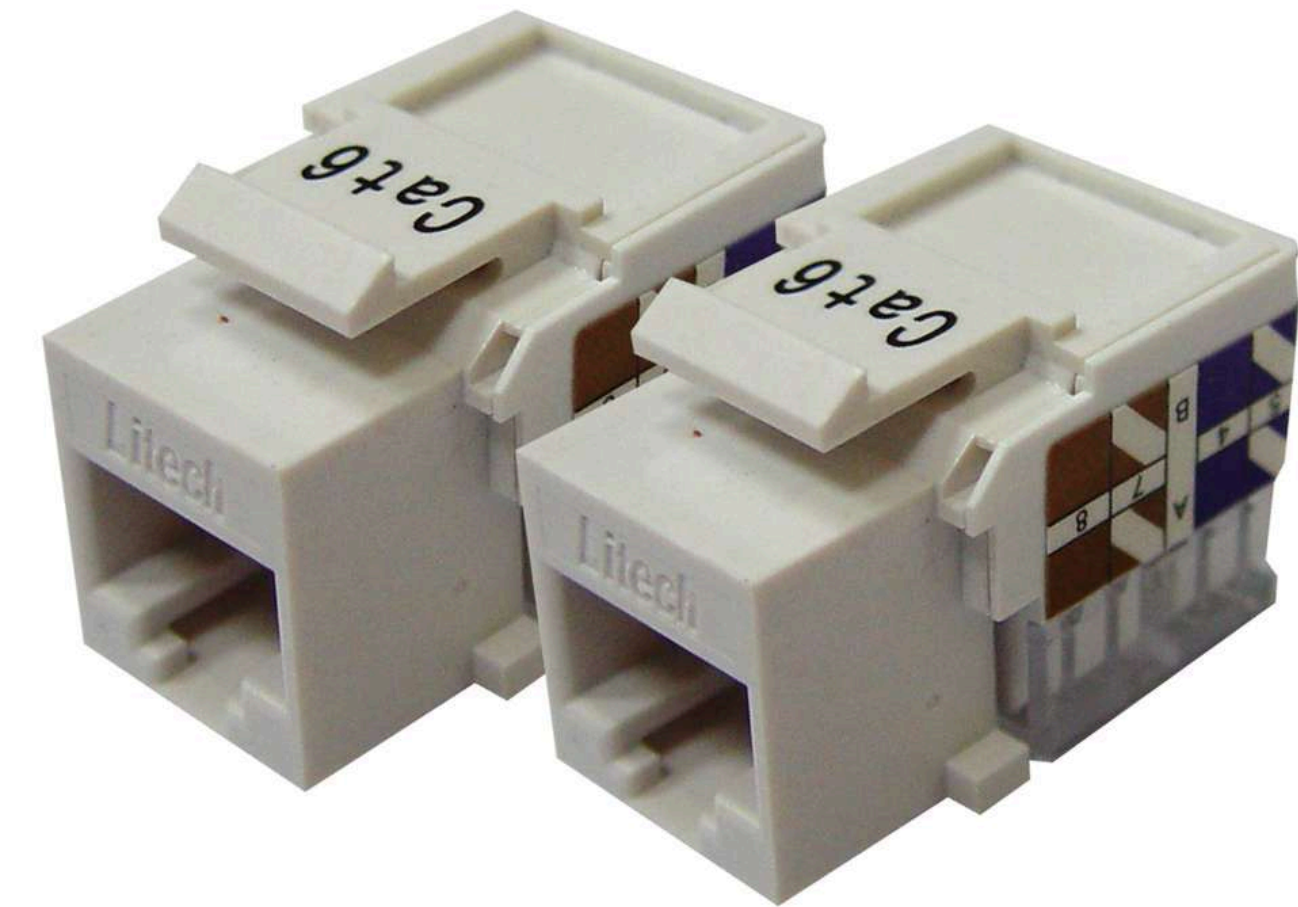
Conductor Resistance	75 Ω/KM @ 20 °C (MAXIMUM)
Insulation Resistance	5 GΩ/KM @ 20 °C (MINIMUM)
Mutual Capacitance	60 nF/KM (MAXIMUM)
Spark Test	6KV
High Voltage Test	1.0 KV DC FOR 1 MINUTE

Make/Origin

Make	AXYS
Manufacturer	AXYS Connect
Origin	United Arab Emirates

CAT6 RJ45 MODULAR JACK UNSHIELDED

PART NO: AX-CAT6-RJ45-MJ-USCH



Description

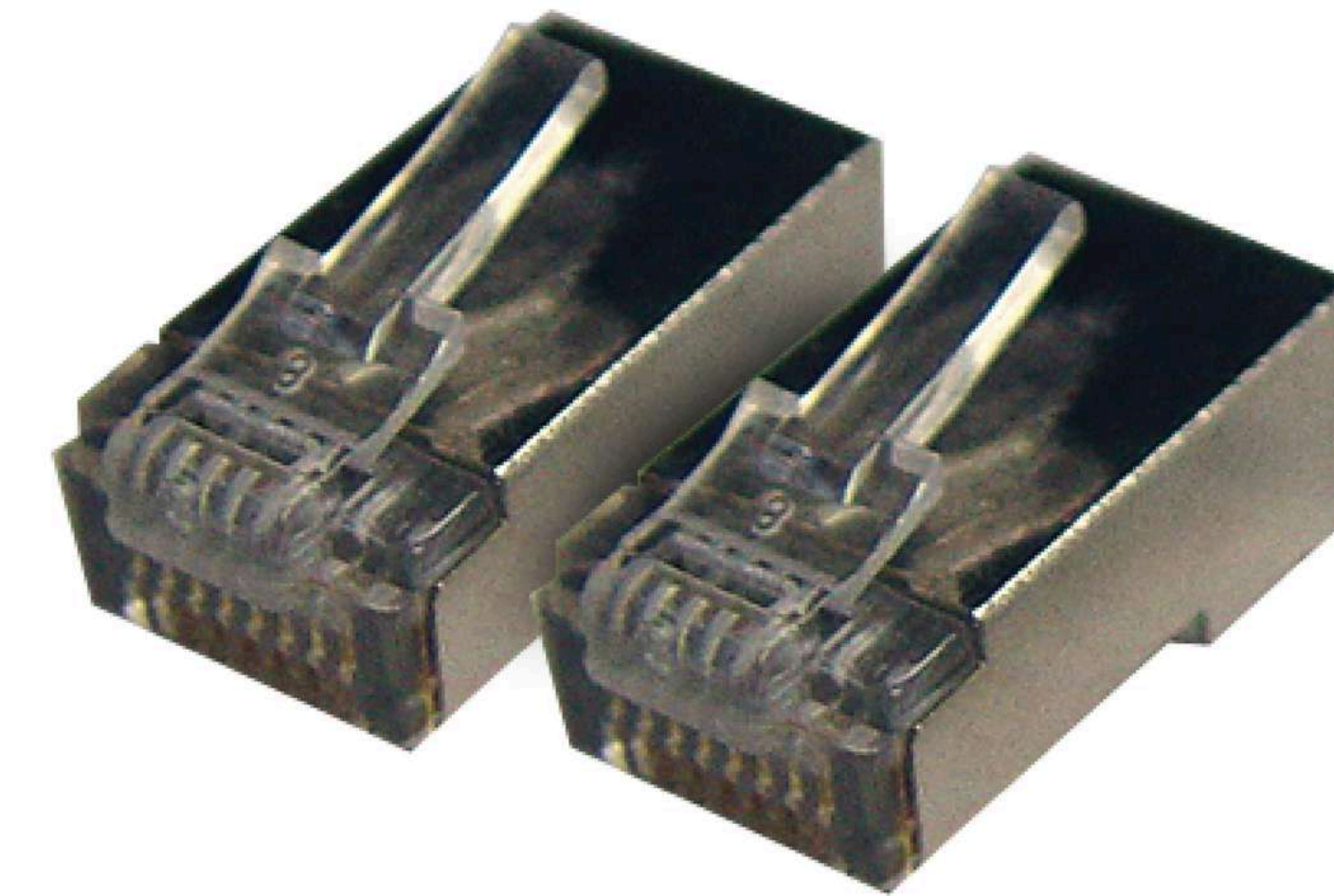
Modular Jack features a easy termination IDC designed together with PC based for superior performance. Shielded and unshielded jack are available for UTP and STP applications.

Feature

- Exceeds TIA/EIA and ISO/IEC 11801 Standards
- With T568A & T568B coloured codes

CAT6 MODULAR PLUG SHIELDED

PART NO: AXYS-CAT6SOL# 03



Description

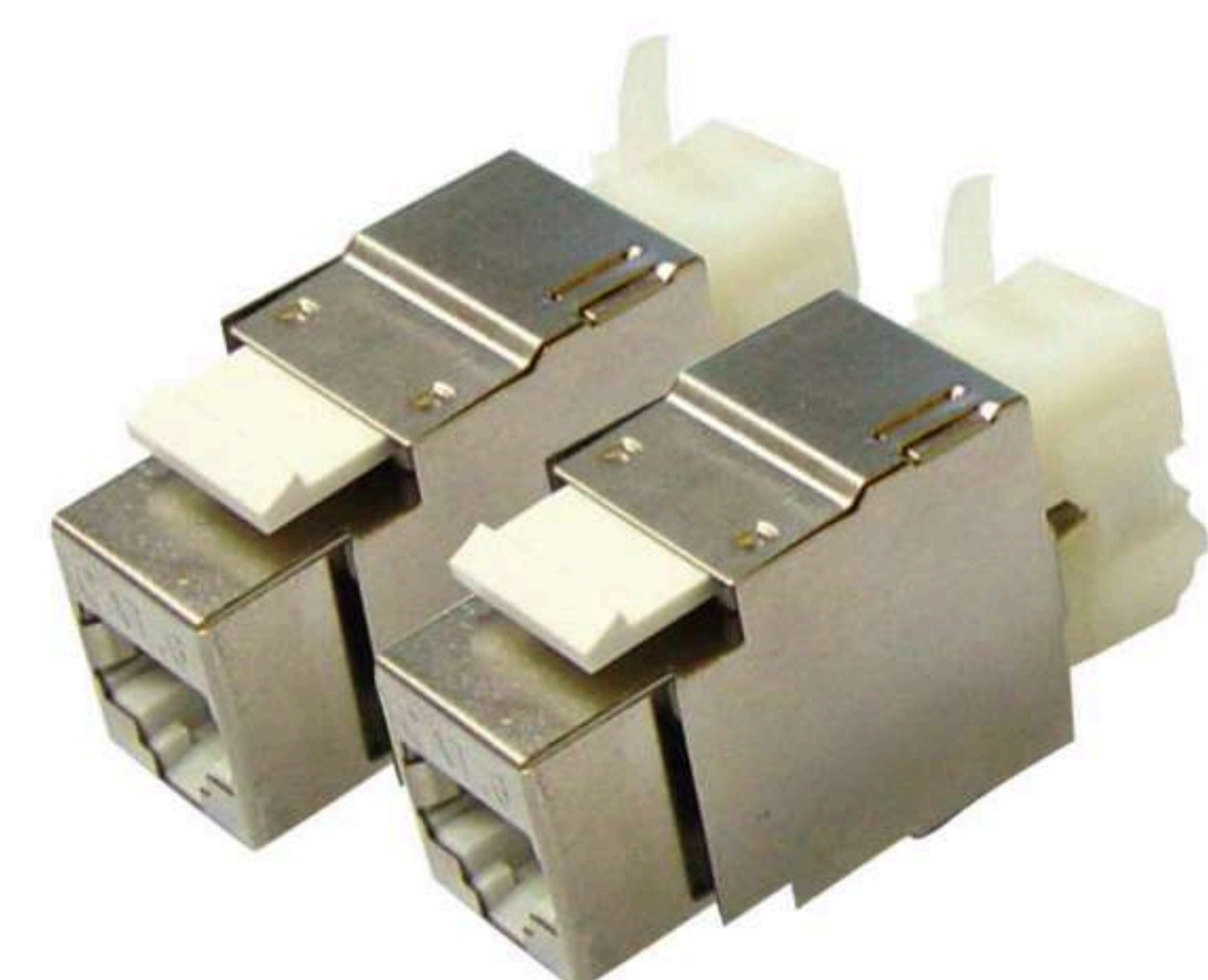
- Tangle free latch prevents snags and provides easy release saving time during patching
- Exceeds IEC 60603-7 specification
- Integral pair manager optimizes performance and consistency by reducing untwist at plug
- Contacts plated with 50 microinches gold
- Shielded plug housing provides conductive patch for grounding

Specifications

Parameter	Specification
Mechanical Characteristics	
Plug Material	Polycarbonate F,UL94V-0
Contact Material	Phosphor Bronze with 50 micro-inches gold over 100 micro-inches nickel
Wire Gauge	24-26 AWG 100ohm stranded or solid shielded cable with max. conductor insulation diameter of .040"
Electrical Characteristics	
Dielectric Strength	100V RMS at 60Hz for 1 minute
Volatage Rating	150Vac maximum
Current Rating	1.5A maximum
Insulation	1MΩ maximum

CAT6 RJ45 MODULAR JACK SHIELDED

PART NO: AX-CAT6-RJ45-MJ-SCH



Description

Modular Jack features a easy termination IDC designed together with PC based for superior performance. Shielded and unshielded jack are available for UTP and STP applications.

Feature

- Exceeds TIA/EIA and ISO/IEC 11801 Standards
- With T568A & T568B coloured codes

CAT6 MODULAR PLUG UNSHIELDED

PART NO: AXYS-CAT6SOL# 05



Description

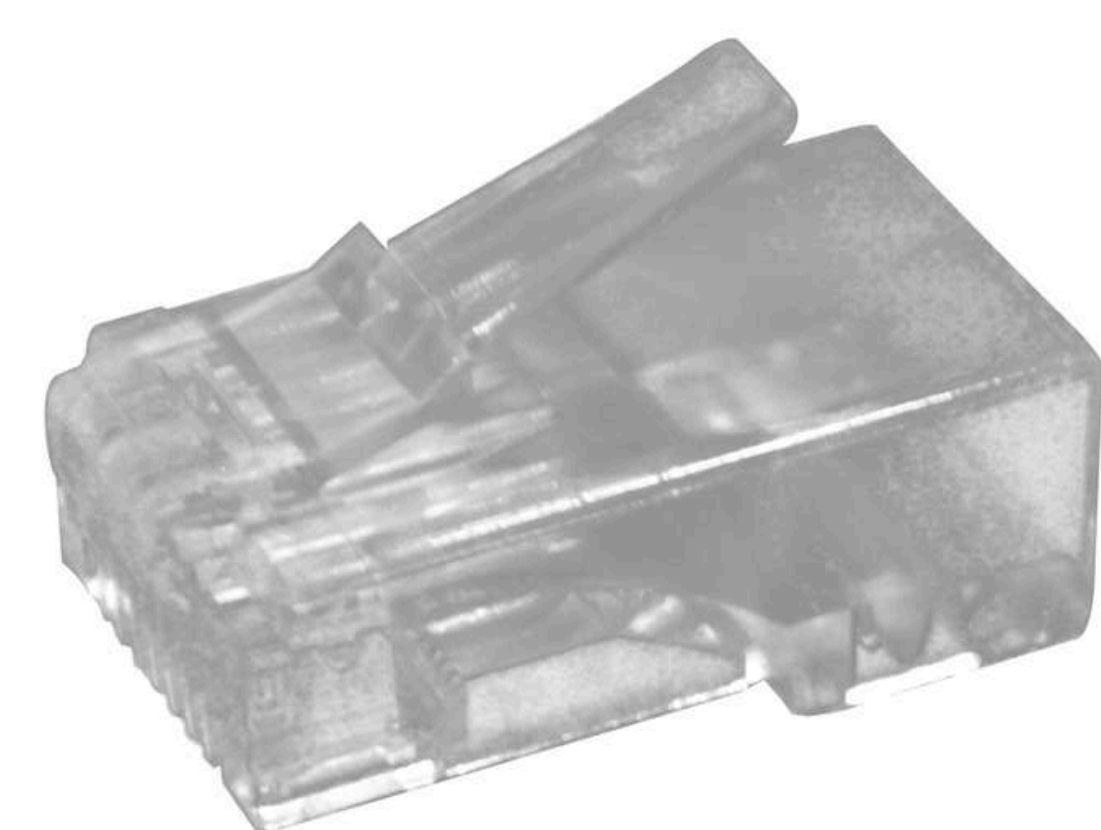
- Tangle free latch prevents snags and provides easy release saving time during patching
- Exceeds IEC 60603-7 specification
- Integral pair manager optimizes performance and consistency by reducing untwist at plug
- Contacts plated with 50 microinches gold
- Shielded plug housing provides conductive patch for grounding

Specifications

Parameter	Specification
Mechanical Characteristics	
Plug Material	Polycarbonate F,UL94V-0
Contact Material	Phosphor Bronze with 50 micro-inches gold over 100 micro-inches nickel
Wire Gauge	24-26 AWG 100ohm stranded or solid shielded cable with max. conductor insulation diameter of .040"
Electrical Characteristics	
Dielectric Strength	100V RMS at 60Hz for 1 minute
Volatage Rating	150Vac maximum
Current Rating	1.5A maximum
Insulation	1MΩ maximum

CAT6 MODULAR PLUG UNSHIELDED WITHOUT INSERT – WH

PART NO: AXYS-CAT6SOL# 04



Description

Modular Jack features a easy termination IDC designed together with PC based for superior performance. Shielded and unshielded jack are available for UTP and STP applications.

Feature

- Exceeds TIA/EIA and ISO/IEC 11801 Standards
- With T568A & T568B coloured codes

CABLE BOOT CAT6

PART NO: AXYS-CAT6SOL# 07



Description

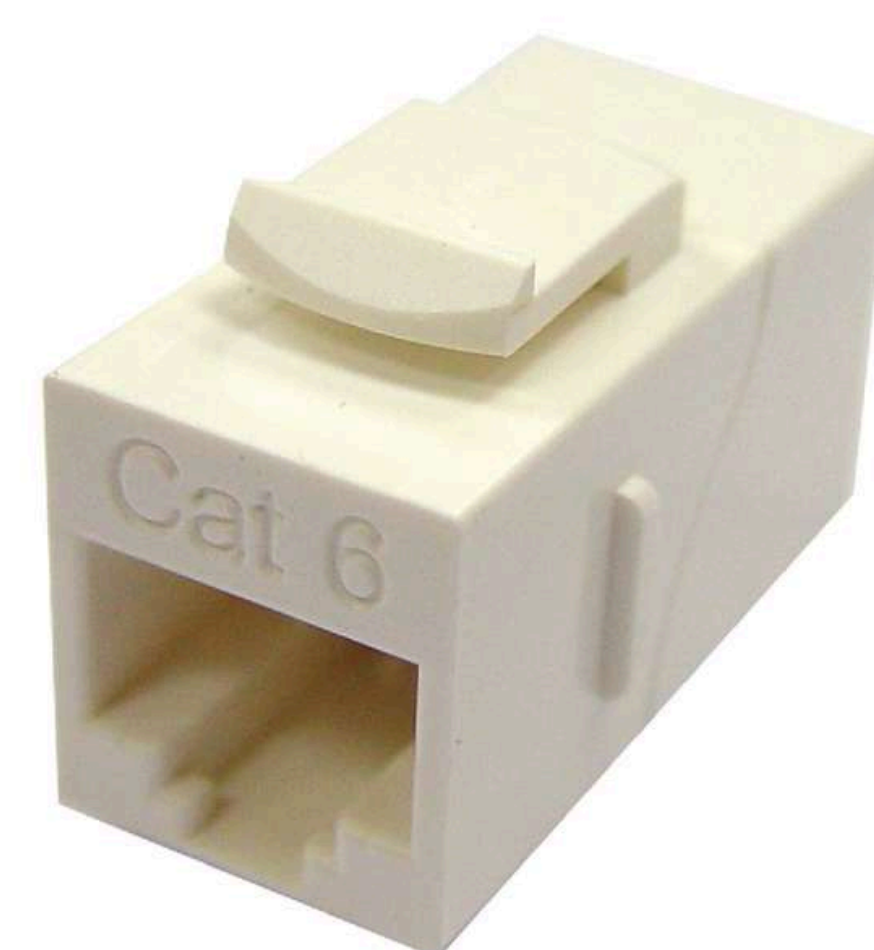
Modular Jack features a easy termination IDC designed together with PC based for superior performance. Shielded and unshielded jack are available for UTP and STP applications.

Feature

- Exceeds TIA/EIA and ISO/IEC 11801 Standards
- With T568A & T568B coloured codes

CAT6 INLINE RJ45-RJ45 ADAPTER

PART NO: AXYS-CAT6SOL# 06



Description

Modular Jack features a easy termination IDC designed together with PC based for superior performance. Shielded and unshielded jack are available for UTP and STP applications.

Feature

- Exceeds TIA/EIA and ISO/IEC 11801 Standards
- With T568A & T568B coloured codes

19" PATCH PANEL CAT6 48 PORT

PART NO: AX-CAT6-19PP-48P



Description

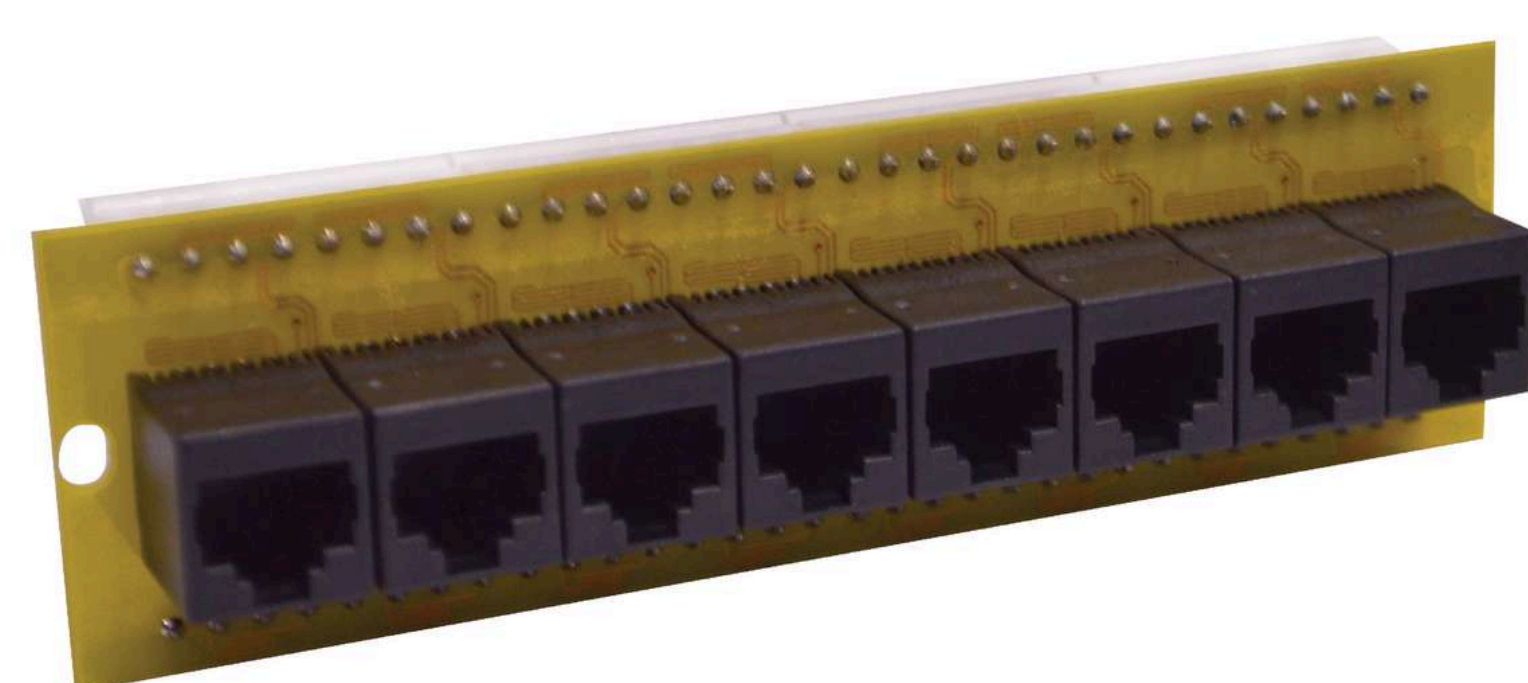
Modular Jack features a easy termination IDC designed together with PC based for superior performance. Shielded and unshielded jack are available for UTP and STP applications.

Feature

- Exceeds TIA/EIA and ISO/IEC 11801 Standards
- With T568A & T568B coloured codes

19" PATCH PANEL CAT6 6 & 8 PORT WITHOUT METAL PART

PART NO: AXYS-CAT6SOL# 09



Description

Modular Jack features a easy termination IDC designed together with PC based for superior performance. Shielded and unshielded jack are available for UTP and STP applications.

Feature

- Exceeds TIA/EIA and ISO/IEC 11801 Standards
- With T568A & T568B coloured codes

19" PATCH PANEL CAT6 48 PORT A TYPE

PART NO: AXYS-CAT6SOL# 11



Description

Modular Jack features a easy termination IDC designed together with PC based for superior performance. Shielded and unshielded jack are available for UTP and STP applications.

Feature

- Exceeds TIA/EIA and ISO/IEC 11801 Standards
- With T568A & T568B coloured codes

19" PATCH PANEL CAT6 48 PORT B TYPE

PART NO: AXYS-CAT6SOL# 10



Description

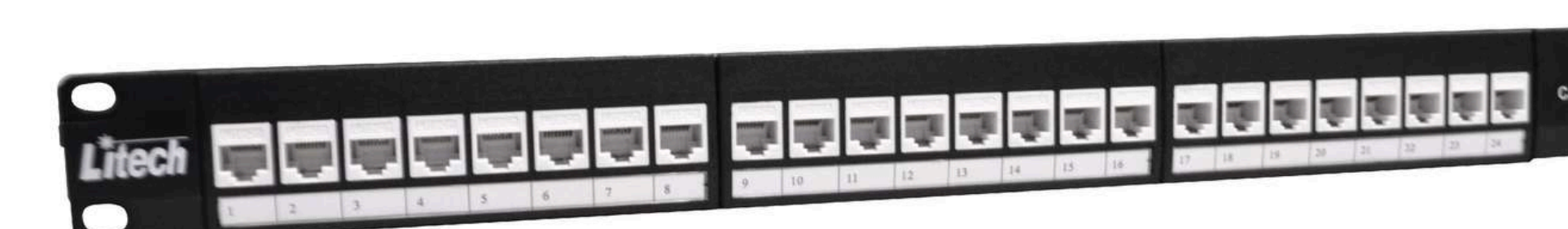
Modular Jack features a easy termination IDC designed together with PC based for superior performance. Shielded and unshielded jack are available for UTP and STP applications.

Feature

- Exceeds TIA/EIA and ISO/IEC 11801 Standards
- With T568A & T568B coloured codes

19" PATCH PANEL CAT6 24 PORT

PART NO: AX-CAT6-19PP-24P



Description

Modular Jack features a easy termination IDC designed together with PC based for superior performance. Shielded and unshielded jack are available for UTP and STP applications.

Feature

- Exceeds TIA/EIA and ISO/IEC 11801 Standards
- With T568A & T568B coloured codes



Experience Smarter Connections



+971 50 579 3191



info@axys-connect.com



UAE Address: Office No. 518, Office Court Building, Opposite Oud Metha Metro Station, Dubai, UAE PO Box: 29684



www.axys-connect.com