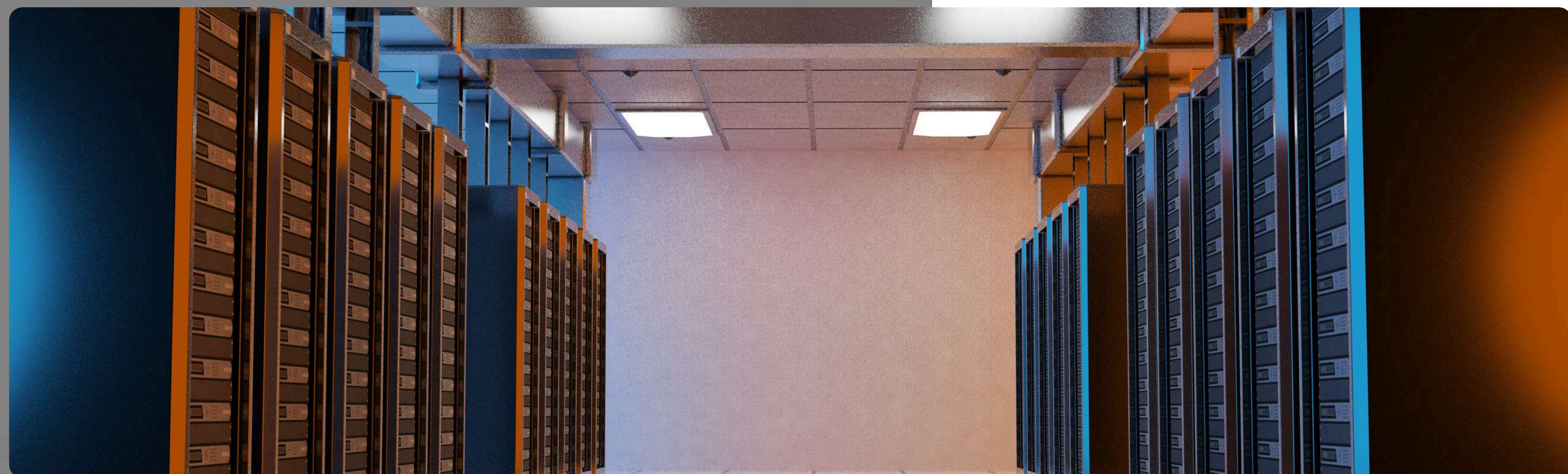
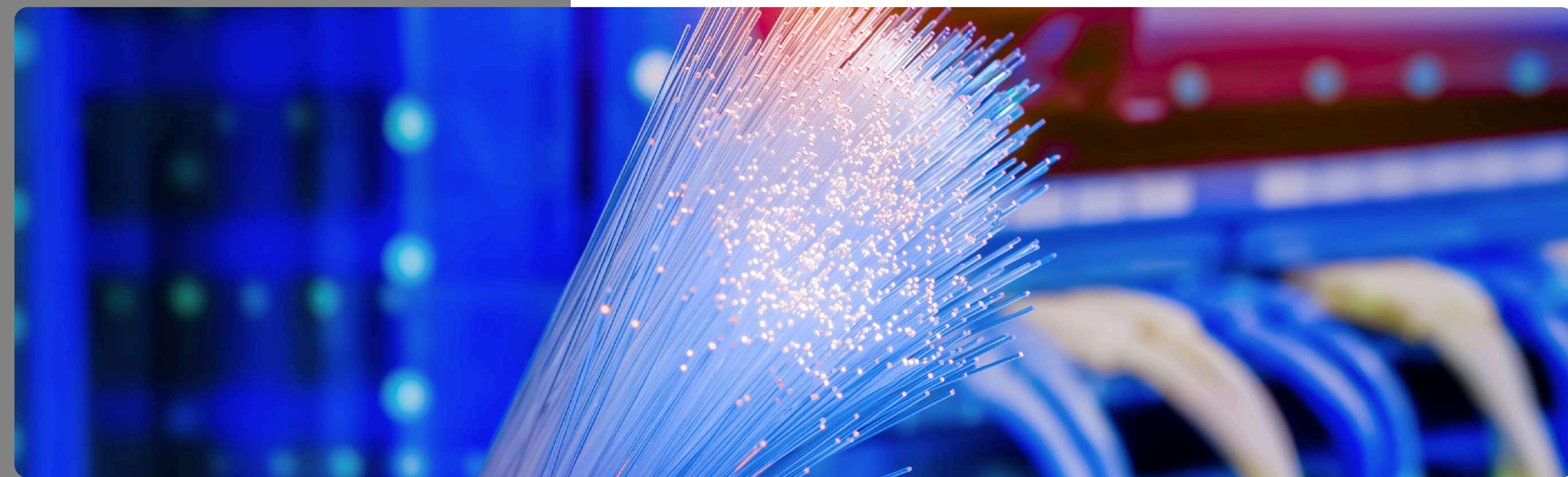
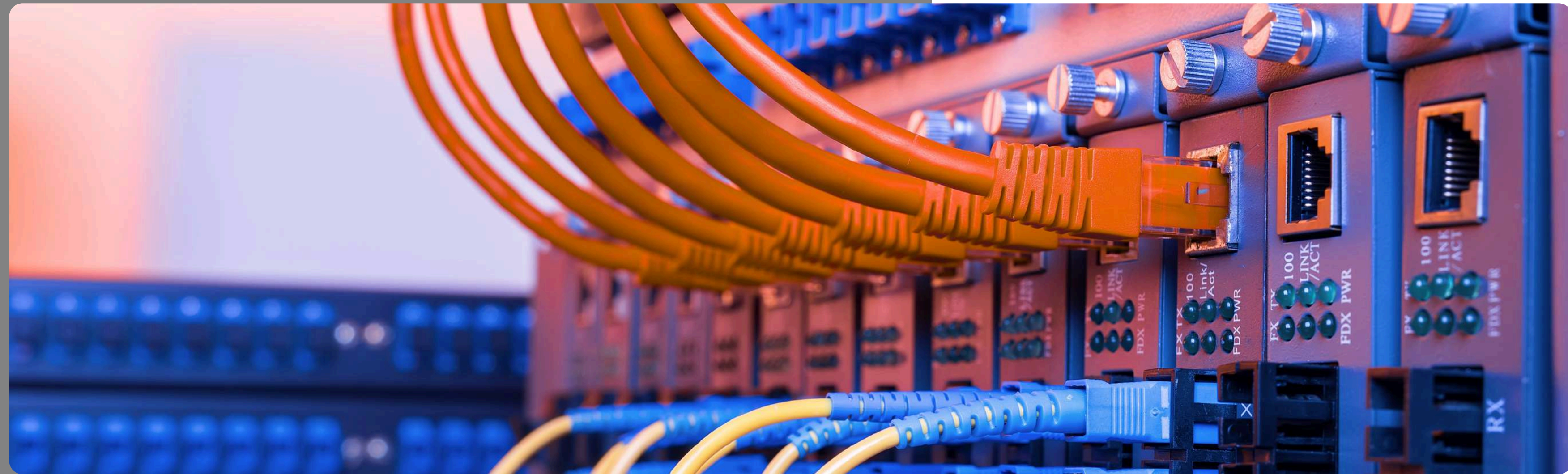




Catalog

Smart Home

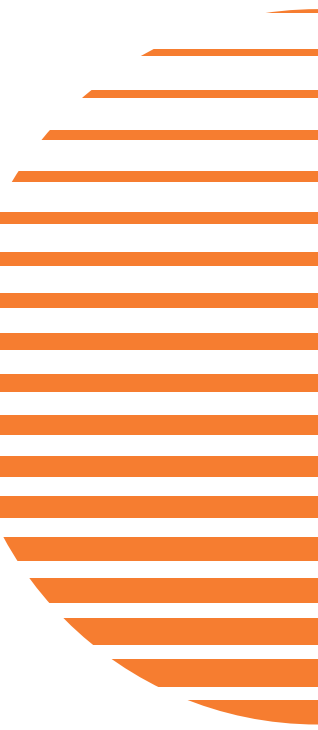


WELCOME

We are pleased to introduce our latest catalog, thoughtfully crafted to provide comprehensive and accessible information on smart home solutions. Whether you're exploring wireless or wired options, our catalog is designed for ease of use, featuring intuitive sections that help you find the perfect products to elevate your smart living experience.

At **AXYS Connect**, our dedication to innovation and a customer-focused approach drives us to develop high-performance networking and smart home solutions that keep pace with the fast-evolving market. We continually expand our offerings to meet the diverse needs of our clients.

For the latest updates on new products and enhancements to our existing range, we invite you to visit our website at www.axys-connect.com. Thank you for choosing **AXYS Connect**, where your connectivity needs are our priority.



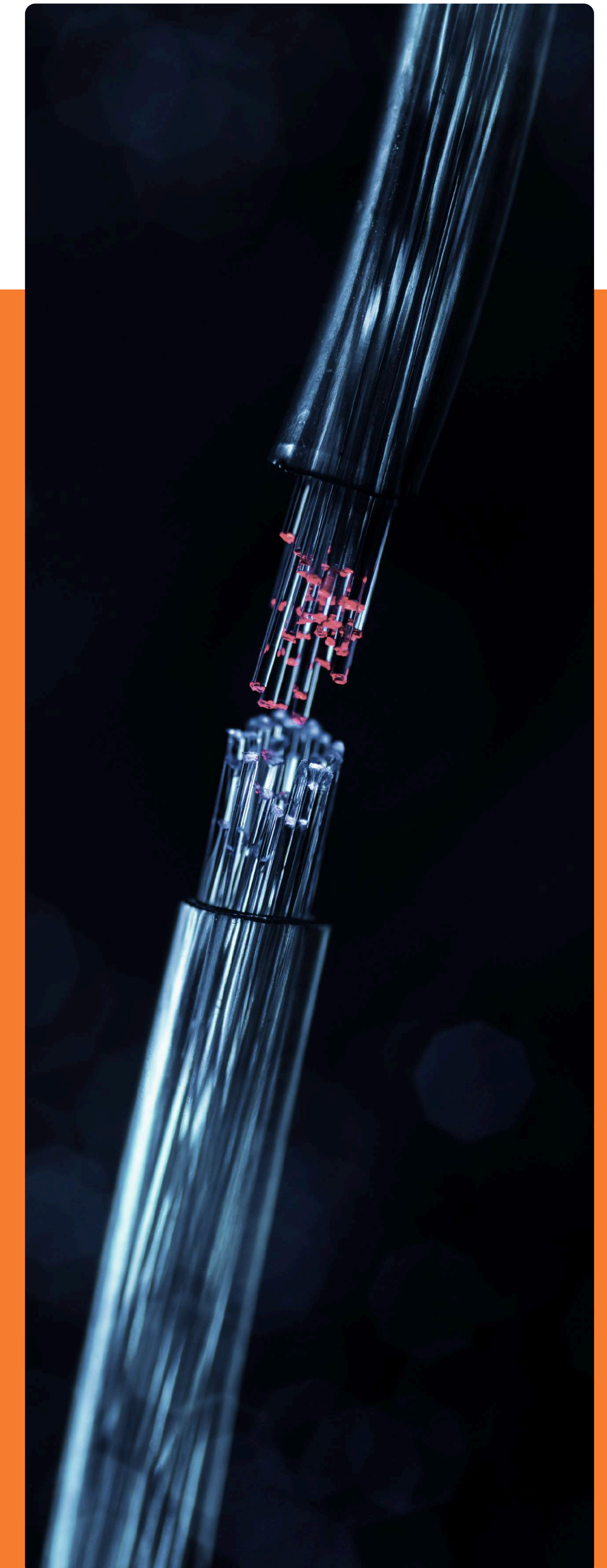


ABOUT US

AXYS Connect is a premier brand that delivers comprehensive, end-to-end solutions for connectivity and security across various sectors. We are committed to enhancing the technological landscape by providing robust, reliable, and innovative infrastructure solutions tailored to meet the evolving needs of our customers.

Our product portfolio includes a diverse range of offerings such as high-quality copper cables, patch cords, patch panels, fiber optic products like pigtails (both multimode and singlemode), and an extensive selection of network racks, switches, and accessories. These products are designed to ensure seamless, high-performance connectivity, whether for residential, commercial, or industrial applications.

Our dedication to excellence extends beyond manufacturing. We collaborate with the best system integrators and distributors in the industry, ensuring that our solutions are installed with precision and adhere to the highest standards of quality and performance. This strategic partnership model enables us to maintain superior quality control, resulting in installations that are not only reliable but also optimized for long-term performance.





SMART HOME

Transform your space with advanced smart home systems, featuring KNX, Zigbee, and CoSS technologies to enhance convenience, security, and energy efficiency. Our smart solutions provide intuitive control over your environment, allowing for effortless management.

CONTENTS

Smart Home

CoSS Solutions

CoSS	01
Switches	02
Control Center	10
Home Security	16
Shading System	26
Room Climate	32

KNX & Zigbee Solutions

Hypanels	35
Smart Panels	



CoSS

A wireless communication protocol that is as stable as a wired network

Communication of Smart Star Network (CoSS) is a new IoT communication protocol independently developed by LifeSmart to achieve communication interconnection and automation for IoT devices. CoSS adopts wireless connection technologies comparable to wired connection technologies. Specially designed for IoT, CoSS defines the communication model, data structure, and interaction format on the physical layer, link layer, and application layer; In CoSS, the design for RF communication is optimized, which greatly simplifies product development processes. The model integrity is maintained, as well as the simplicity and stability of the protocol, providing a solid basis for the management and intellectualization of devices.

Long Distance
Long Distance

Low Power Consumption
Ensuring 10-year battery life of a no-neutral switch

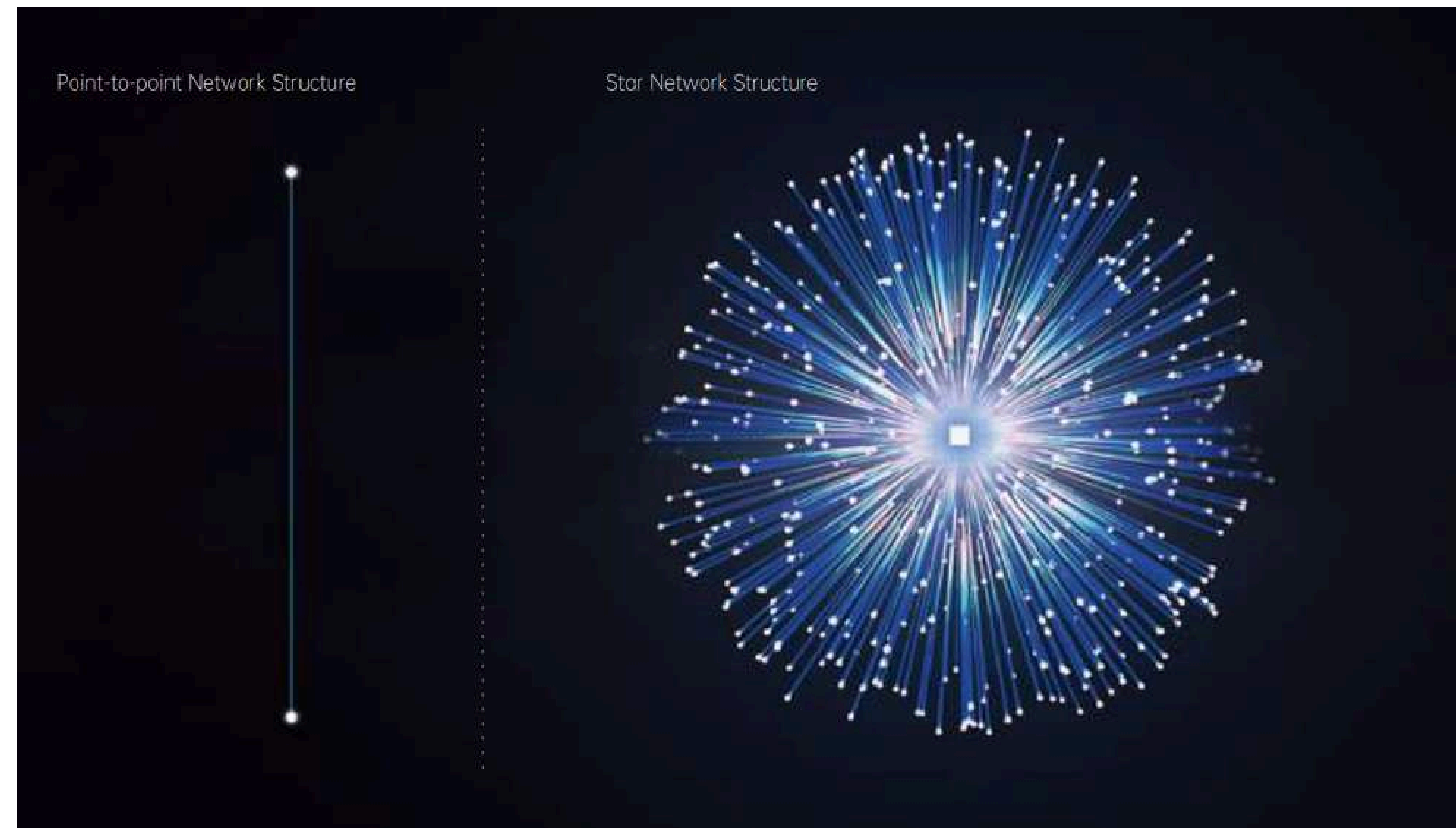
Low Radiation
1/100,000 of the radiation from a cellphone

High Stability
Telecom-level communication standard

High Security
Restricted access and multiple encryption

Large Capacity
Support up to 500 sub-devices

	CoSS	zigbee	ZWAVE	Bluetooth	WiFi
Transmission Distance	100-800 meters	30-100 meters	40-100 meters	20-100 meters	40 meters
Wall Penetration	High (433-922Mhz)	Low (2.4Ghz)	High (868-922Mhz)	Low (2.4Ghz)	Low (2.4Ghz)
Power Consumption	Extremely Low	Low	Low	Low	High
Stability	High	High	Low	Low	Low
Capacity	High	High	High	High	Low
Bandwidth	Low (1kbps-128kbps)	High (256kbps)	Low (9.6kbps/40kbps)	High (1mbps)	Extremely High (>54mbps)
Radiation	Low	Low	Low	Low	High
Standardization	Private	Standard	Standard	Standard	Standard
Cost	Medium-High	Medium-High	High	Medium-High	Medium-High
Configuration	Easy	Easy	Easy	Easy	Difficult



We Are The Brand Supporting the Most Wireless Communication Protocols on the Market

We Are The Brand Supporting the Most Wireless Communication Protocols on the Market

In the field of IoT, we firmly believe that the future belongs to wireless communication protocols. We always take customers' value as our top priority and select the wireless communication protocols that are most suitable for users' cases. We provide products supporting the most protocols on the market, including Wi-Fi, BLE, Zigbee, Z-Wave, and our independently developed CoSS. For video-related applications and some smart products, we use Wi-Fi. For personal consumer electronics, we use Bluetooth or a combination of Bluetooth and Wi-Fi. Granted with the Z-Wave Security S2 certification in Japan, we are the first Chinese company to receive this certification.

//// BLEND SMART SWITCH

Replace your traditional switch to the smart one and make the lights freely controlled

Description

The LifeSmart BLEND Smart Switch replaces your normal switch with smart home technology to make your life easier. Combined with the LifeSmart Smart Station and the free LifeSmart App, you have infinite control possibilities. In addition to traditional switch control of your lights and switched outlets, you can choose combination controls over all of your LifeSmart Smart Home products. With one button you can choose to turn on your television, stereo, air conditioner, space heater, and coffee maker individually or all at once, even across the house.



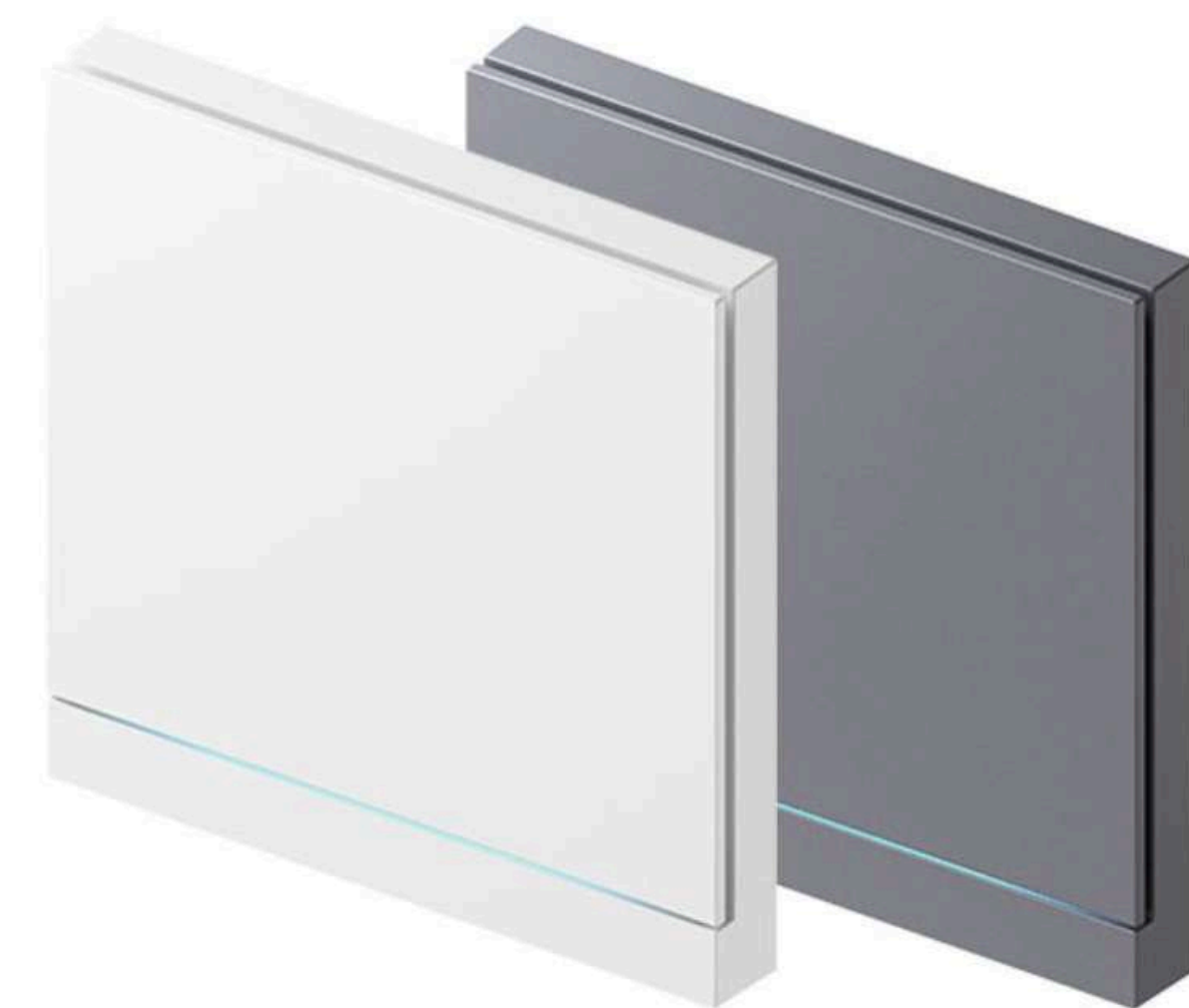
//// BLEND SWITCH PRO (METAL)



Description

Frameless and Simple

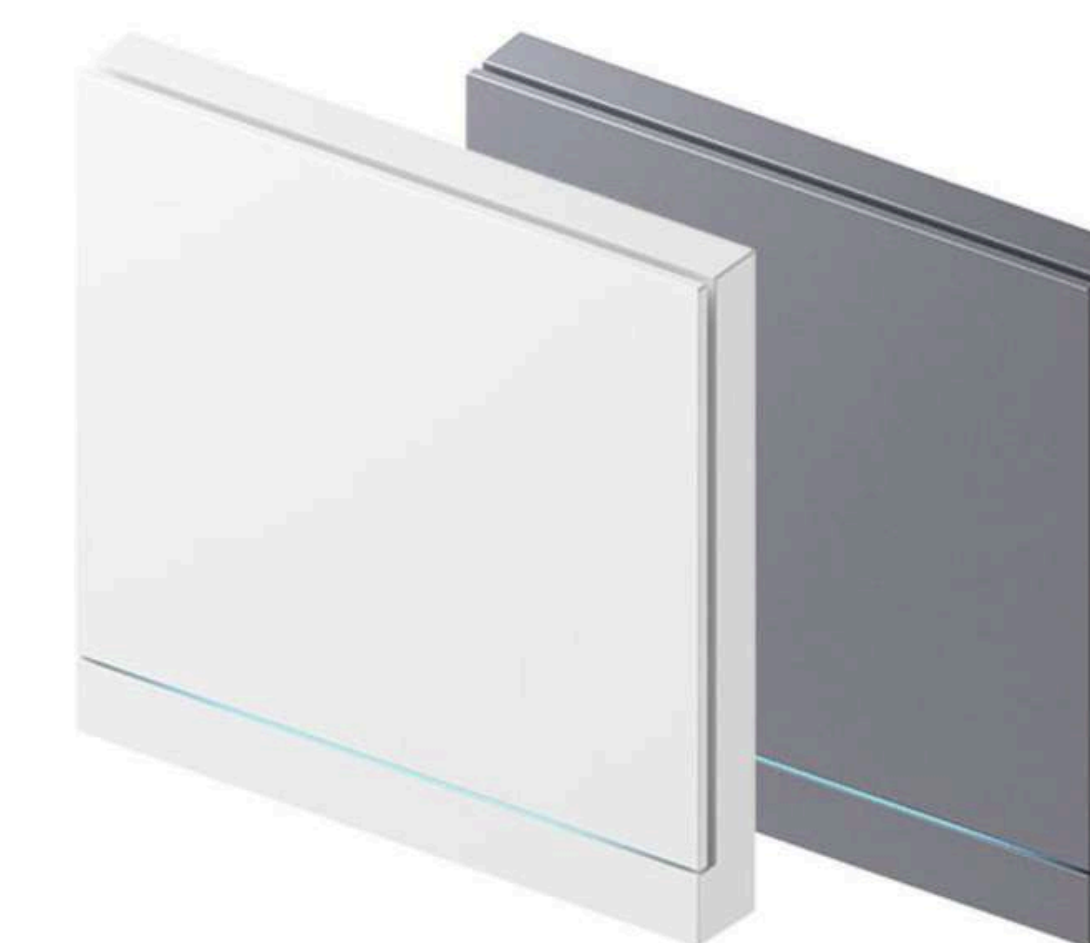
//// BLEND SWITCH PRO



Description

The smart switch with dawn light, give you a cool experience.

//// BLEND SWITCH PRO (SINGLE LIVE)



The smart switch with LED strip, give you a cool experience.

Description

The LifeSmart BLEND Switch (Single Live) is a Single wire intelligent switch that changes the limitations of traditional single-control of switches.

It's no need for external wiring which is friendly for both the pre-installation market and the post-installation market of the decoration.

You just need to install one kind of 86 base for your whole house, then you can control multiple smart devices at the same time to achieve many different smart scenes according to usage habits. Since we use a battery to power the switch when it has been closed, the BLEND Switch is more stable and safer than the no-neutral smart switches in the market.

/// CUBE CLICKER



A simple click to run complex scenes

Description

The LifeSmart Cube Clicker is a very useful button which can be attached nearly everywhere, a simple one-click action button can trigger a series actions in a space occupied with Smart Home devices. It gives you an easy access to your Smart Home without taking out your Mobile Device.

/// CUBE SWITCH MODULE PRO



Make troditional switch into a smart one

Description

LifeSmart CUBE Switch Module PRO is in extremely small size and very easy to install. It is suitable for all 86 types of switches. It can easily upgrade traditional switches to intelligent ones.

/// CUBE SWITCH MODULE



Make troditional switch into a smart one

Description

LifeSmart CUBE Switch Module is in extremely small size and very easy to install. It is suitable for 80, 86, 120 and many other panels of different specifications. It can easily upgrade traditional switches to intelligent ones.

/// DIMMER & MOTION SENSOR SWITCH



Customize your own brightness with motion detection

Description

Dimmer & Motion Sensor Switch integrates light control, motion detection, illuminance detection together into one device. It triggers light ON/OFF by detecting motion and illuminance, so it may realize light ON when people coming, light ON when getting dark and many other smart control scenes.

MOONSTONE SWITCH 120



Touchable switch leads you into a simple smart life

Description

The Moonstone switch is made of 2.5D glass material, which has a good hand feel, thick glass brings a heavy safety texture. A 3D vibration motor brings precise control feedback.

NATURE SWITCH



Touchable switch which design your wall decor

Description

The Nature switch adopts Touch Pro technology and brings ultimate touch experience for lighting. It is also designed with DIY Colorful LED indicator, you can turn on the light easily in the dark. The cover adopts tempered glass with oleophobic coating, which is wear resistant and easy for cleaning & maintenance.

NATURE SWITCH L (WHITE AG GLASS)



The Nature switch adopts Touch Pro technology and brings ultimate touch experience for lighting.

Description

The Nature switch adopts Touch Pro technology and brings ultimate touch experience for lighting. It is also designed with DIY Colorful LED indicator, You can turn on the light easily in the dark. The cover adopts tempered glass with oleophobic coating, which is wear resistant and easy for cleaning & maintenance.

POLAR SWITCH



Independent power supply, perfect solution for 120 live-only wiring switches.

Description

Polar Switch adopts extremely low power consumption technology and independent power supply. It supports single live line, neutral and live line and low direct current ($\leq 30V$). It eliminates the flicker when a traditional single live line switch is connected to a low power light bulb, providing an easy solution for installation and use.

SMART SWITCH AIR (8 KEY 4 WAY WHITE)



Ultra-thin panel, Matte finished cover

Description

With its ultra-thin panel measuring a mere 2.5mm at its thinnest point, the Smart Switch Air (8 Key 4 Way) is a testament to precision engineering.

The Switch features a vibrant 16 million color LED backlight indicator, ensuring a clear display that won't disturb your well-deserved rest.

Its warm white color and fog matte finish add a touch of elegance and high-quality texture. , seamlessly blending with a range of popular home improvement styles.

Elevate your interactions with the Smart Switch Air, a true testament to ingenuity.

STARRY SWITCH



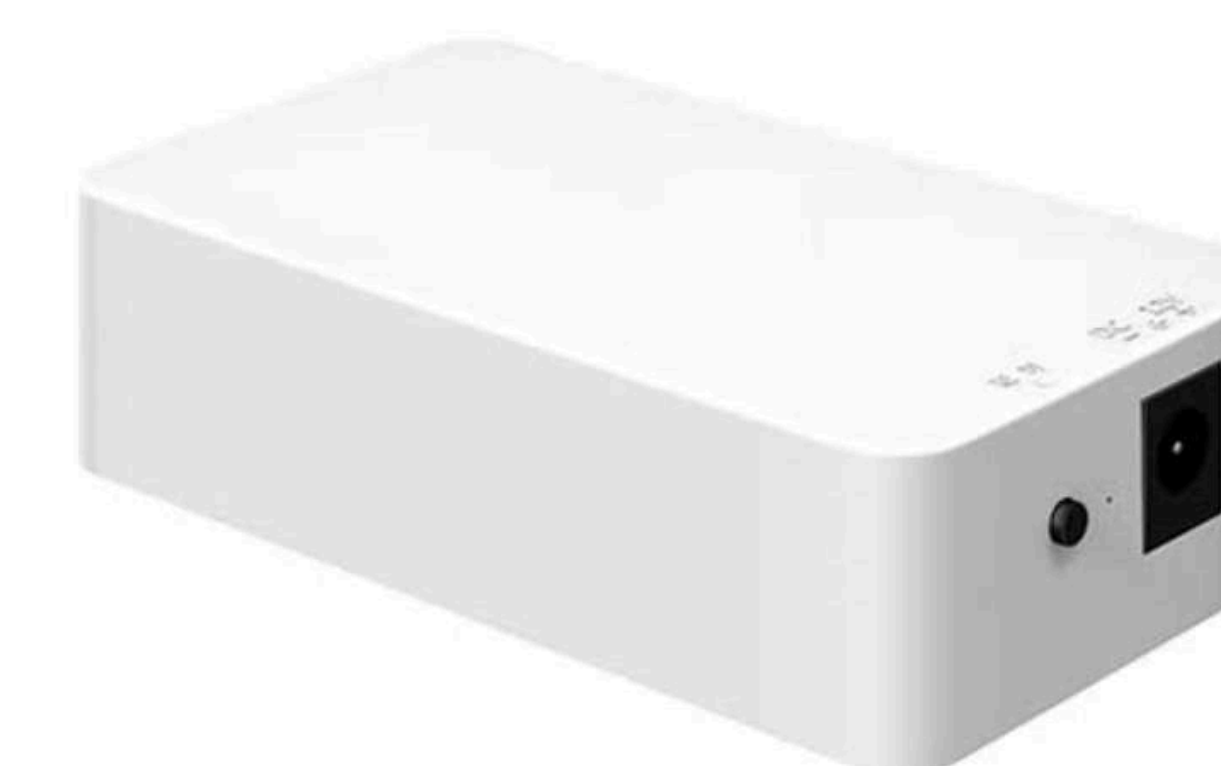
Independent power supply, perfect solution for live only wiring

Description

Lifesmart's Starry Switch adopts extremely low power consumption technology, works independently without external power. It supports single live line, null and live line, and low direct current, and also can be used as a passive switch. It eliminates the flicker when a traditional single live line switch is connected to a low power light bulb, providing an easy solution for installation and use.

Lifesmart's Starry Switch also supports two-way communication and mobile control. You can manage it through our app whenever and wherever. It can be paired with other smart devices such as Cube Motion Sensor and Cube Door/Window Sensor, to trigger Smart Scenes like light on when you come home and lights off when you leave the house.

GENERAL CONTROLLER



A professional engineer device, updating switches/button/sensors of dry contact to integrate with LifeSmart system perfectly and achieve intelligent control

Description

LifeSmart's General Controller is a professional engineer device. It integrates digital input and output from 3rd party devices. By connecting to the General Controller, switches/buttons/sensors of dry contact could integrate with LifeSmart system perfectly and achieve intelligently

NATURE



All-in-one smart control panel

Description

LifeSmart Nature is a Metal frame all-in-one smart control center. It's designed with a Colorful UI, 4 customizable physical scene buttons, and a 10.25" high-definition touch screen to enjoy wonderful HCI (human-computer interaction). It could control smart devices like lighting switches, dimmer, door locks, curtain motors, air conditioners, SONOS, cameras... It's also an intercom, compatible with Akuvox and Dahua door stations.

/// NATURE 7 PRO



Full-screen Control Panel and a Smart Gateway

Features

- 7-inch High definition touch screen
- Configurable built-in menu to meet your needs
- Customizable physical buttons to switch scenes
- Works as a gateway
- Built-in speaker
- AF coating
- PoE power supply
- Android 11 OS to ensure low-power and stable operation
- Supports multiple protocols including CoSS, Zigbee, Wi-Fi

/// NATURE MINI PRO



The only thing we changed is everything

Description

Nature Mini PRO is a smart home control panel installed at the intersection of moving paths in your home. It has a 4-inch HD touch screen to provide you with a wide visual space and a comfortable interaction experience. With a powerful hardware platform to support multi-mode protocols and a customized operating system, it can transmit control signals to smart home devices and receive status feedback, thus realizing control functions of smart devices such as turning off lights and opening curtains.

Nature Mini PRO supports multiple protocols including CoSS, Zigbee, dual band Wi-Fi and BLE.

/// NATURE MINI L



The World's First standard 120 Smart home control panel.

Description

Nature Mini L is a smart home control panel installed at the intersection of moving paths in your home. With a full screen, edge-to-edge touchpad, it could be an in-wall light switch, a scene panel, a weather display, or even works like a thermostat. Users can control various types of smart equipment at home, switching between modes including Away, Sleep, Film, and Dining; or precisely control their curtains, adjust brightness and color of their lights, and temperatures of their air conditioner. Nature Mini L effectively enhances your smart life experience!

/// NATURE MINI PRO(POE)



The only thing we changed is everything

Description

Nature Mini PRO (PoE) reinvents the smart home control panel with a full screen, edge to edge touch pad, with PoE power supply. It could be a scene panel, a weather display or even works as a thermostat. Users are able to control various types of smart equipment at home, switching between modes including Away, Sleep, Film, and Dining; or to precisely control their curtains, adjust brightness and color of their lights, and temperatures of their air conditioner. Nature Mini PRO (PoE) effectively enhance your smart life experience!

//// NATURE X



A Multi-functional Controller & Gateway

Features

- Every desk deserves a Nature X~
- What's it?
- It's a super gateway
- It's a professional environment indicator
- It's your health-caring assistant
- It's the best companion for SONOS
- It works with Tesla
- It's your first smart device

//// SMART PLUG(ZIGBEE UK, WITH MONITOR ENERGY USAGE)

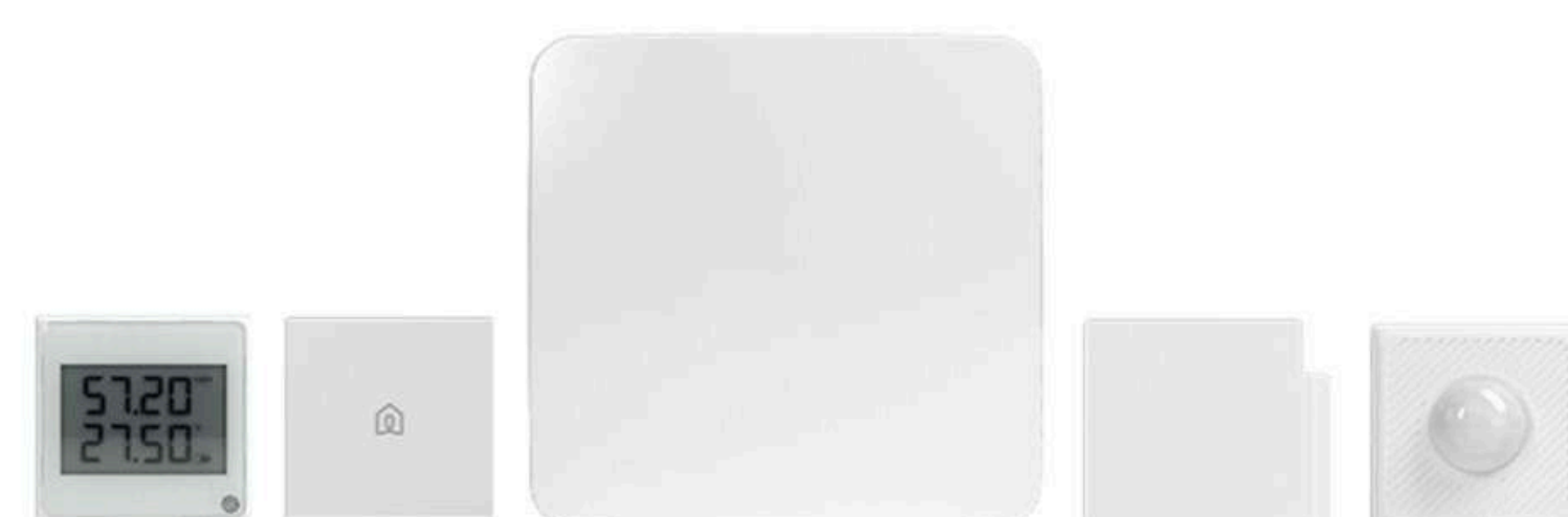


Control electrical appliances and record their energy consumption

Description

Smart plug turns your electrical appliances smart by enabling you to control them through LifeSmart APP on your phone at or away from home. It also enables you to automatically switch appliances on and off according to a programmable timer and measure the energy consumption.

//// SMART HOME STARTER KIT



Center of the smart home ecosystem and make all the devices work seamlessly

Description

With the Smart Home Starter Set, you can easily and quickly enable your LifeSmart devices to work with Apple HomeKit. Starts your home control using just your voice by "Hi Siri..."

Do-it-yourself with ease. Complete your smart home system within only three simple steps with no need of any tools.

//// SMART PLUG(ZIGBEE US, WITH MONITOR ENERGY USAGE)



Control electrical appliances and record their energy consumption

Description

Smart plug turns your electrical appliances smart by enabling you to control them through LifeSmart APP on your phone at or away from home. It also enables you to automatically switch appliances on and off according to a programmable timer and measure the energy consumption.

SMART STATION



Center of the smart home ecosystem and make all the devices work seamlessly

Description

Smart Station is the gateway to our smart system. As the core of the LifeSmart platform, the Smart Station connects all of your devices and sensors wirelessly. You can stay informed of changing conditions, trigger actions, and remotely control various aspects of your home or office. The Smart Station logically links all of your devices to work seamlessly together.

SPOT MINI



An IR remote controller to simplify your life by interacting with all LifeSmart smart home system

Description

SPOT Mini, a mini Universal Remote Controller, a fantastic product to simplify your life. It does not only simply replace the traditional remote controls, but also interacts with other LifeSmart products via Smart Station. Televisions, air conditioners, fans, any IR device can be controlled by this SPOT Mini. By an easy setup, the SPOT can trigger the IR equipment intelligently.

SPOT



A fantastic IR remote controller to simplify your life by interacting with all LifeSmart product series

Description

SPOT, a Universal Remote Controller, a fantastic product to simplify your life. It does not only simply replace the traditional remote controls, but also interacts with other LifeSmarts products via Smart Station. Televisions, air conditioners, fans, any IR device can be controlled by this SPOT. It functions as a night light as well, with 16 million light colors at your choice. By an easy setup, the SPOT can trigger the lighting, the sound, and other home appliances intelligently. With the help of LifeSmart Cloud services and other amazing technologies, every single home will become a smart home, every single office will become a smart office.

DEFED DOOR/WINDOW SENSOR



A narrow design opening contact, applicable for any windows or doors you want. The built-in temperature sensor could make users aware of room environment.

Description

A narrow design opening contact, applicable for any windows or doors you want. The built-in temperature sensor could make users aware of room environment. It will send alarm notifications to you via LifeSmart when someone intrudes illegally. And the DEFED Siren worked in the alarm system will produce sound alarm to deter the intruder.

DEFED INDOOR SIREN



Description

DEFED Indoor siren is the sound notified of the alarm system. When there is an alarm message is triggered, a loud notification will be produced by this equipment. The sound is up to 109 decibels.

DEFED MOTION SENSOR



Description

DEFED Motion Sensor supports an ultra-long dynamic sensing range of up to 12 meters, displaying the current sensing state with its dual-color LED indicator.

DEFED KEY FOB



DEFED Key Fob is a remote control device for the DEFED alarm system that is portable to set up scenarios freely.

Feature

- DEFED Key Fob is a remote control device for the DEFED alarm system that is portable to set up scenarios freely.
- With the indicator feedback mechanism, you can accurately get to know the execution of the current instructions.
- Customized button for scene triggering
- Both for the alarm system and smart home system
- 800m wireless distance transmission
- LED indicator for visual feedback

DEFED SMART STATION



Description

The gateway and information center of alarm system. It's a controlling equipment with colorful indicator to visualize the current state of the system.

INDOOR CAMERA (4PM)



4MP H.265 Wi-Fi Pan & Tilt Camera

Description

The Indoor Camera adopts a high-performance 4 megapixel 1/3 inch CMOS image sensor, equipped with a panoramic pan head, and has good night vision effect. It can see every corner of the home clearly whether it is day or night. The intelligent upgrade of human form detection allows Yunmi's indoor camera to quickly track moving pedestrian targets in the picture. If there are abnormal foreign invaders, they can accurately send out alarm messages in the first time. When the owner returns home and does not want the camera to continue monitoring, privacy mode can be activated through linkage, and the camera can be blocked with one click to protect the user's personal privacy.

INDOOR CAMERA



1080P Wi-Fi Pan and Tilt Indoor Camera

Description

LifeSmart intelligent indoor camera with motion detection, allows you to monitor what matters, without receiving annoying false alerts. This camera is designed with a cute shape, both a home furnishings and an advanced indoor camera. It can support a series of features like real-time live view, pan and tilt, two-way talk, video recording, moving detection and communication with other smart devices. The effects of audio and video are also improved enormously. Via LifeSmart app, you can never miss every significant moment, anytime and anywhere.

OUTDOOR CAMERA (1080P)



1080P outdoor camera with sound-light alarm to actively guard your house 24/7.

Description

The Outdoor Camera is installed outside for surveillance, with an HD wide-angle lens, real-time monitoring of the situation outside the house. The motion snapshot is recorded in the local storage of the Outdoor Camera. With corrosion-resistant metal material and strict waterproof technology, it is suitable for working in a complex environment.

SMART DOOR LOCK C200

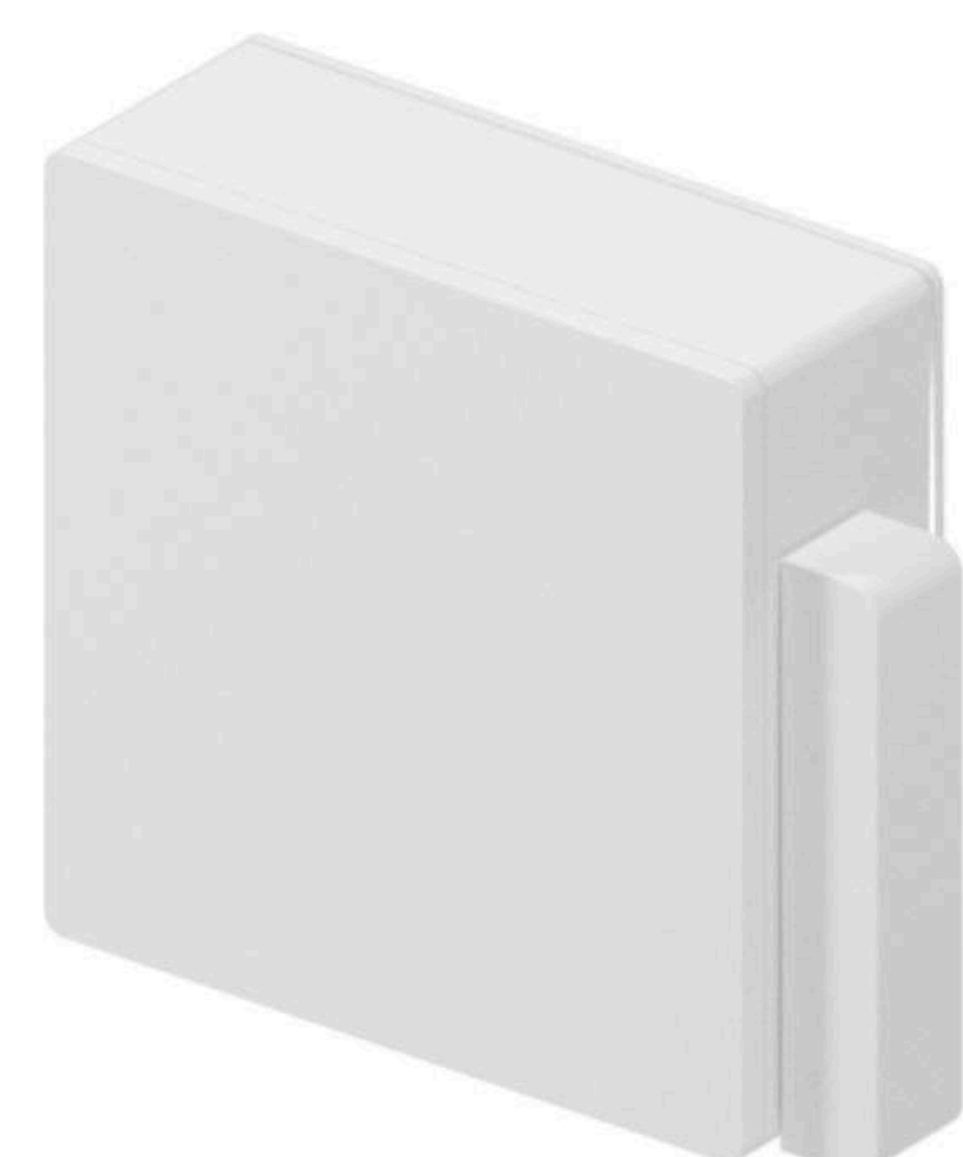


A smart lock with multiple ways for access and can communicate with your home devices

Description

Smart Door Lock C200, made with IML technology, is an IoT smart lock that supports various unlocking methods such as fingerprint, password, Bluetooth, NFC, and mechanical key. It uses FPC fingerprint recognition technology for a 360-degree full-angle unrestricted fingerprint capture, ensuring high precision and speed. The door can be opened immediately by pressing down on the handle between grips.

/// CUBE DOOR/WINDOW SENSOR



A-simple-to-install door/window sensor combined magnetic sensor and vibrating sensor

Description

The LifeSmart's CUBE Door/window Sensor can send a notification through your Life Smart App when the door/window is detected open. It can also be used to trigger events with other smart devices, like making a snapshot with your Smart Home Wi-Fi Camera of whoever enters your house. The device is equipped with a vibration sensor. If someone tries to break-in, you can get notified instantly. It is also a CUBE Clicker. One simple click can trigger a series of actions of the smart devices. With the help of LifeSmart Cloud services and other amazing technologies, every single home will become a smart home, every single office will become a smart office.

/// FORMALDEHYDE SENSOR



Description

Detect the formaldehyde index in your room and notify you via LifeSmart app when formaldehyde index exceeds the threshold value.

/// ENVIRONMENT SENSOR(CO₂)



Air quality monitoring of CO₂, taking care of your family 24 hours

Description

LifeSmart Environment Sensor(CO₂) can provide a timely warning when natural CO₂ levels get extreme. It uses industrial-grade sensors for real-time detection and also supports remote viewing from mobile phones. Once CO₂ exceeding is discovered, the device will immediately push the information to your phone to help you eliminate gas hazards.

/// GAS SENSOR



A gas sensor with sound alarm for immediate notifying

Description

LifeSmart Gas Sensor can provide a timely warning when natural gas leaks. It uses industrial-grade sensors for real-time detection and also supports remote viewing from mobile phones. Once a gas leak is discovered, LifeSmart Gas Sensor will immediately sound the alarm and push the information to your phone to help you eliminate gas hazards.

HOUSEHOLD GAS DETECTOR

The product adopts advanced small current gas sensing element and built-in temperature compensation, works steadily and simple to install.



Description

The product adopts advanced small current gas sensing element and built-in temperature compensation, works steadily and simple to install. It can detect small combustible gases in the air in time, accurately send out an acoustic and optical alarm signal ($\geq 70\text{dB}$), and transmit the alarm signal to the customer's mobile phone APP through the Smart Station, so that the customer can be promptly dealt with.

It is suitable for safety monitoring of combustible gases in homes, hotels, apartments and other places.

HUMAN PRESENCE SENSOR (ZIGBEE)

Adopt microwave radar technology to sensitively detect human motion



Description

The human presence sensor adopts millimeter wave Doppler radar, sensing human movement and static presence. It detects via human movement Doppler parameters and human physiological parameters synchronized sensing technology for wireless perception of human status in the area, reports the wireless signal to the gateway to activate smart scene linkage; suitable for home, hotel, office and other places.

IN-WALL AIR QUALITY DETECTOR (ZIGBEE)

In-wall Air Quality Detector is an air quality monitoring terminal that can be equipped with optional PM2.5 sensor, temperature and humidity sensor.



Description

In-wall Air Quality Detector is an air quality monitoring terminal that can be equipped with optional PM2.5 sensor, temperature and humidity sensor.

It can be widely used in scenarios such as residential, commercial and industrial places, and can effectively improve air quality and create a healthy, comfortable, efficient, environmentally friendly and energy-saving living and working environment.

INDEPENDENT PHOTOELECTRIC SMOKE FIRE DETECTION ALARM

This product adopts advanced optical sensing principle, can quickly find the smoke during the initial smoldering of the fire



Description

This product adopts advanced optical sensing principle, can quickly find the smoke during the initial smoldering of the fire, find the occurrence of fire as soon as possible and send wireless signals to the gateway through independent sound alarm and wireless signal to timely remind users to alarm, extinguish fire or escape, reduce or avoid losses.

MOTION SENSOR PRO



Motion Sensor PRO: Advanced PIR Sensing and Smart Device Activation for Comfort.

Description

Motion Sensor PRO: Advanced PIR Sensing and Smart Device Activation for Comfort.

WATER LEAK SENSOR



Ensure safety and the comfort of use when there is water leak

Description

LifeSmart Water Leak Sensor uses an ultra-low power consumption processor and a high-reliability probe to detect a water leak. When a water leak occurs, it uses advanced wireless communication technology to send a notification alert to the mobile phone through the Smart Station. It can be widely used in the kitchen, warehouse and other locations to protect your property.

BLEND CURTAIN CONTROLLER PRO



Description

The BLEND Curtain Controller PRO can be connected to electric. Users can remotely control the traditional curtain via mobile app, making the doors, windows and curtains to be smart or work with other smart devices.

Feature

- Two color for optional
- Make traditional curtain motor smart
- Control the traditional curtain through physical wiring for the panel
- Remotely control the curtain via mobile app or Nature panel series

Inspired by classic modernist design

Construction

Color	White/Gray
Dimensions	86*86*36.5mm
Casing	Panel: ABS+PC, Control Accessory: PC

Radio

Radio Protocol	CoSS
Range(Open field)	200m
Range(Open field)	200m

Specification

Model Number	LS240-WCN、LS240-GCN
Installation	In-wall concealed with 86 back box
Operating Temperature	-5~45°C
Operating Humidity	5~90%
Interface	Live, Neutral, Curtain open, Curtain close
Power Supply	AC 100-240V 50/60Hz
Static Consumption	<1.5W
Maximum Overload	200W

QUICK CURTAIN MOTOR



Description

DIY curtain bundle, one stop buy for smart curtain.

Feature

- Adjustable track length
- One tap to control the whole shading system
- Scheduled task
- Accurate control by percentage
- Voice control

Specification

Model Number	BCM100D
Curtain Track Length	Maximal 5.2m
Moving Speed	12cm/s
Rated Torque	1.2Nm
Operating Temperature	-20~85°C
Operating Humidity	0~80%
Power Supply	100-240V AC 50/60Hz
Power Consumption	40W
Power Cable Length	85cm
Interface	RJ11
Button	Coding / Setting button
Track Set	Track(1m)* 4, track (0.5m), track(0.2m)*2, track(0.1m), connector(0.2m), connector(0.1m)*5
Maximal Load	40Kg

Turn your traditional curtains into smart ones

Construction

Color	White
Dimension	270*50*50mm
Weight	5kg
Casing	ABS, aluminum

Radio

Radio Protocol	CoSS
Signal Range(Open Field)	100m

BLEND CURTAIN CONTROLLER PRO



Description

The BLEND Curtain Controller PRO can be connected to electric. Users can remotely control the traditional curtain via mobile app, making the doors, windows and curtains to be smart or work with other smart devices.

Feature

- Two color for optional
- Make traditional curtain motor smart
- Control the traditional curtain through physical wiring for the panel
- Remotely control the curtain via mobile app or Nature panel series

Inspired by classic modernist design

Construction

Color	White/Gray
Dimensions	86*86*36.5mm
Casing	Panel: ABS+PC, Control Accessory: PC

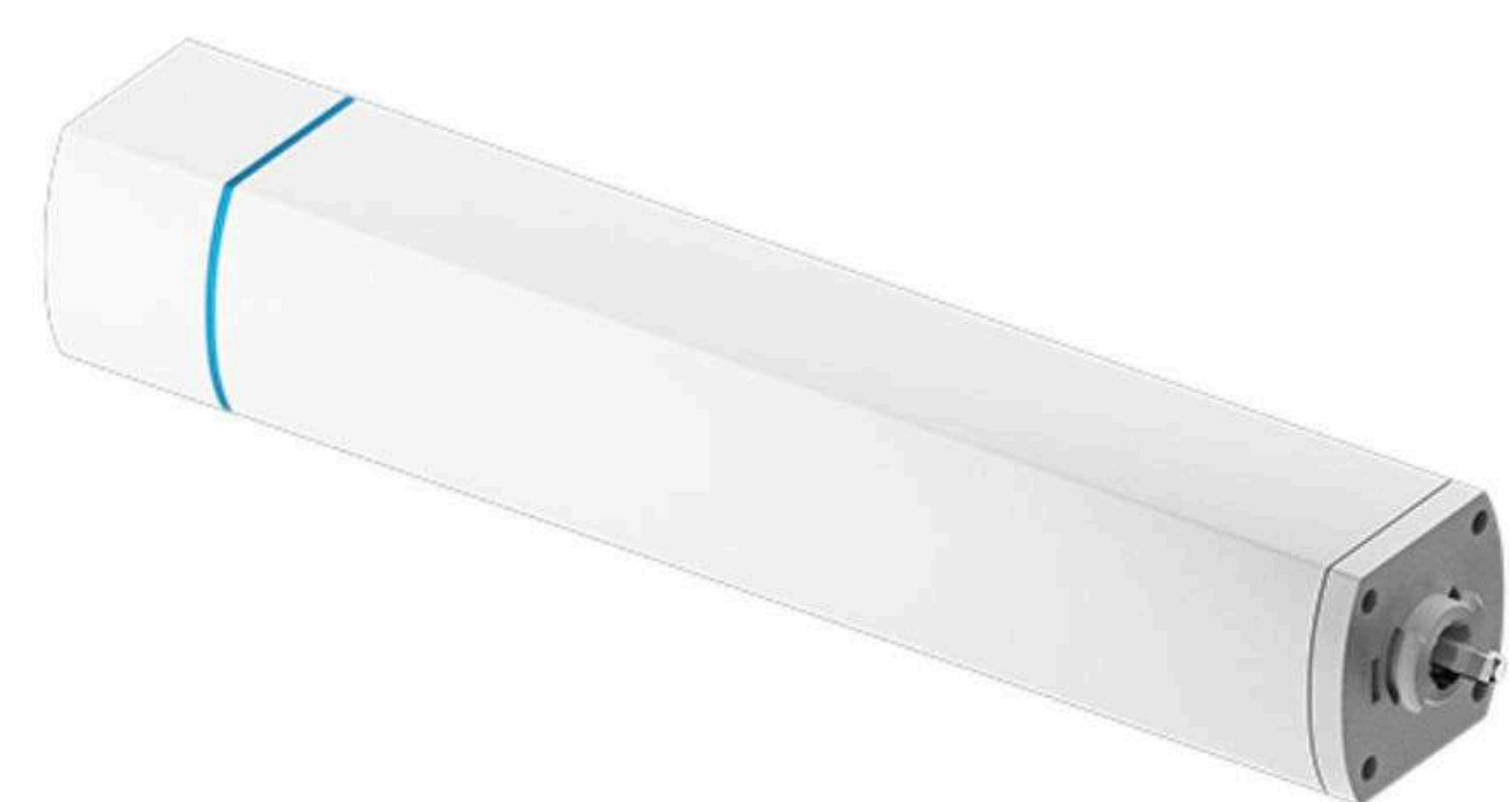
Radio

Radio Protocol	CoSS
Range(Open field)	200m
Range(Open field)	200m

Specification

Model Number	LS240-WCN、LS240-GCN
Installation	In-wall concealed with 86 back box
Operating Temperature	-5~45°C
Operating Humidity	5~90%
Interface	Live, Neutral, Curtain open, Curtain close
Power Supply	AC 100-240V 50/60Hz
Static Consumption	<1.5W
Maximum Overload	200W

QUICK CURTAIN MOTOR



Description

30db operation sound, silent as a watch.
 Unique socket; Suit all plugs.
 With 3C/CE/PSE/FCC/RCM 5 quality certifications.
 10000+ times operation test, twice the industry average

Feature

- 30db Silence Design
- Universal Adapter
- 5 Certifications(3C/CE/PSE/FCC/RCM)
- Super Safe & Durable

Specification

Model Number	BCM500DS
Moving Speed	12cm/s
Rated Torque	1.2Nm
Ingress Protection	IP20
Power Supply	AC 100V-240V 50/60Hz
Power Consumption	40W
Maximal Load	50Kg
Insulation Class	CLASS F

Turn your traditional curtains into smart ones.

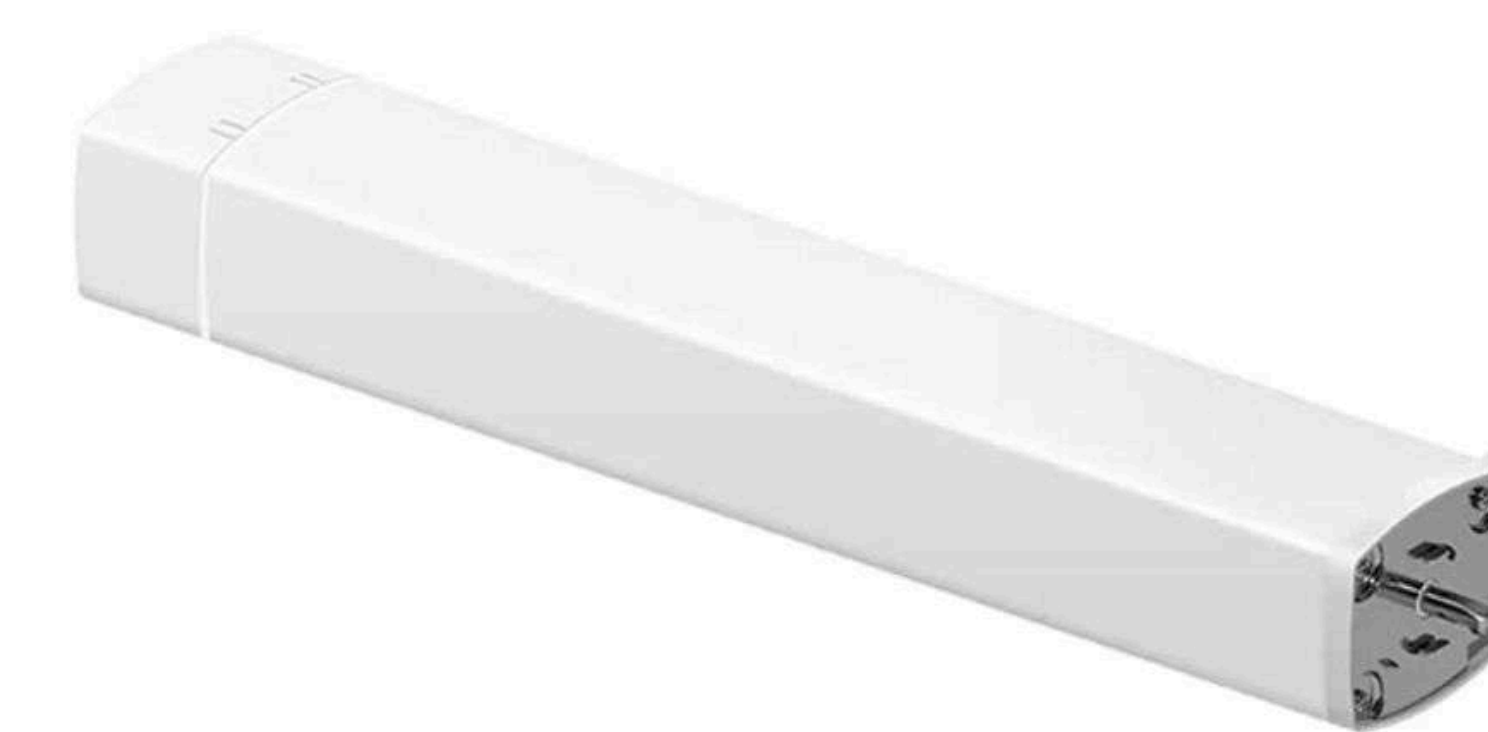
Construction

Color	White
Dimension	50mm*55mm*315mm
Casing	Aluminum Alloy

Radio

Radio Protocol	CoSS
Signal Range(Open Field)	200m

SMART CURTAIN MOTOR



Description

Turn your traditional curtains into smart ones.

Feature

- One tap to control the whole shading system
- Scheduled task
- Accurate control by percentage
- Voice control

Specification

Model Number	LS133WH
Moving Speed	14cm/s
Rated Torque	1.2Nm
Operating Temperature	-5~45°C
Operating Humidity	5~90%
Ingress Protection	IP40
Power Supply	AC 100V-240V 50/60Hz
Power Consumption	13W
Power Cable Length	125cm
Interface	Serial port, weak current switch interface
Indicator	LED
Maximal Track Length	8m
Maximal Load	50Kg
Button	Reset/Receiver pairing button, smart station pairing button

Turn your traditional curtains into smart ones.

Construction

Color	White/Gray
Dimensions	365*60*50mm
Weight	1.3kg
Casing	Aircraft aluminum

Radio

Radio Protocol	CoSS
Signal Range(Open Field)	100m

TUBULAR MOTOR



Description

Integrate the roller blinds into your smart home system.

Feature

- Quiet motor with operating sound below 40dB
- One tap to control the whole shading system
- Scheduled task
- Accurate control by percentage

Specification

Model	WSER40Q-8/23 / WSER40Q-8/19
Rated Torque	8 N.m
Running Time	4 min
Operating Temperature	-5~45°C
Operating Humidity	5~90%
Output Speed	23 rpm (for WSER40Q-8/23) / 19 rpm (for WSER40Q-8/19)
Power Supply	AC 120V, 0.88A (for WSER40Q-8/23) / AC 230V, 0.53A (for WSER40Q-8/19)
Power Consumption	103W (for WSER40Q-8/23) / 121W (for WSER40Q-8/19)
Power Cable Length	125cm
Button	Pairing button
Ingress Protection	IP44
Maximal Track Length	2.5m
Maximal Load	10Kg

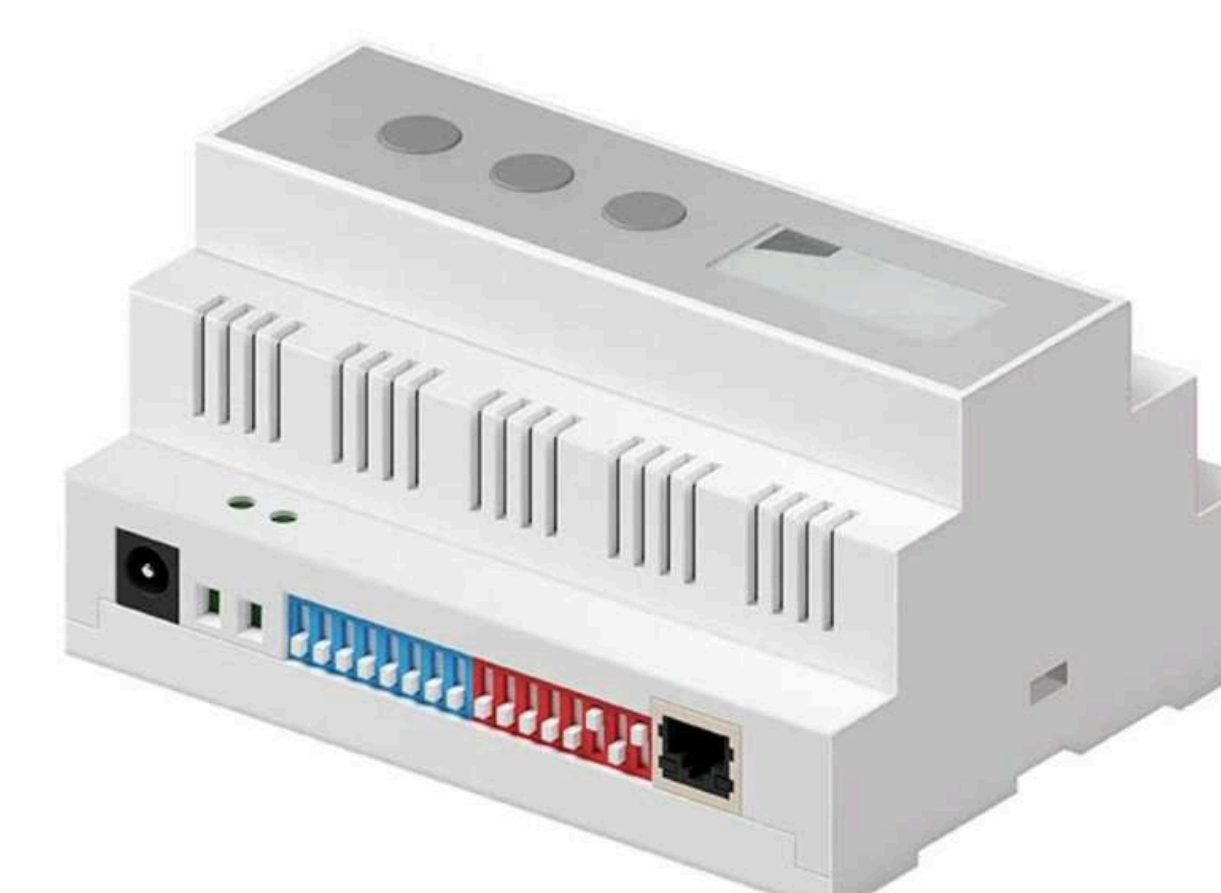
Construction

Color	White
Dimension	φ39*555mm
Weight	1.34Kg
Casing	Steel

Radio

Radio Protocol	CoSS
Signal Range(Open Field)	200m

CENTRAL AC SMART GATEWAY



Description

Connect VRV central AC to LifeSmart system with AC gateway.

Feature

- Smart temperature adjustment
- Energy consumption saving
- Scheduled task

Specification

Model Number	LS175
Operating Temperature	-20~85°C
Operating Humidity	<80%
Power Supply	DC 12V
Power Consumption	<1.2W
Indicator	Yes
Display	Backlit display
Interface	Control output*14, DC power in, RJ45
Button	Dial switch*2, Set, Up, Down

Construction

Color	White
Dimensions	105*86*58mm
Weight	200g
Casing	Flameresitant ABS

Radio

Radio Protocol	CoSS
Signal Range(Open Field)	100m

Function Info

Mode	Cooling / heating / ventilation / dehumidification
Temperature Range	19-30°C
Set Stepping	1°C

CUBE ENVIRONMENTAL SENSOR



Description

It monitors indoor temperature, humidity and illumination and equipped with a LCD display showing these data in real time. It also works with other devices to perform smart, triggers or scenes.

Feature

- Built-in multiple sensors including temperature detection, humidity detection and light detection
- Real-time data display on the screen
- Notifications and record searching via the app
- Tiny size and could be placed anywhere
- Long Standby Time
- Multiple Combination of Triggers

Specification

Model Number	LS063WH
Operating Temperature	-5~45°C
Operating Humidity	5~90%
Power Supply	1 Battery CR2450, 3V
Static Consumption	<1mW
Battery Life	Up to 1 year
Sensitive Element	Temperature sensor, humidity sensor, light sensor
Detection	Temperature, humidity, light
Button	Pairing button
Indicator	LED
Display	LED

One device to simultaneously monitor the temperature, humidity and illumination and indicate these data with a LCD display.

Construction

Color	Ivory white
Dimension	38.4*38.4*16.2mm
Weight	24g
Casing	ABS+PC

Radio

Radio Protocol	CoSS
Signal Range(Open Field)	100m

SMART PLUG



Description

EU&FR standard plug, changing traditional electronic appliances to be smart ones. The smart plug is also equipped with energy metering function. The LifeSmart App also allows you to set devices ON / OFF schedules and know the energy consumption of devices.

Feature

- Energy-consumption monitoring
- Scheduled task support
- Secure casing with flameresistant material

Specification

Model Number	LS159
Operating Temperature	-5~45°C
Operating Humidity	5~90%
Power Supply	AC 100-240V 50/60Hz
Static Consumption	≤0.5W
Maximum Overload	16A
Button	Pairing/operating button
Indicator	RGB LED
Electricity Metering	Yes
Manual Control	Yes
Installation	Plug and play
Socket Standard	EU & FR socket

EU&FR standard plug, changing traditional electronic appliances to be smart ones.

Construction

Color	Ivory white
Dimensions	61*61*84mm
Weight	95g
Casing	Flameresistant PC

Radio

Radio Protocol	CoSS
Signal Range(Open Field)	200m

HYPANEL SUPREME



At a Glance

- 12.35 inch touchscreen with metal frame
- 2.5K (2560×1600) UHD display
- Built in with 2 channels dry contact, 1 digital input
- Multi networks supported: Wi-Fi 6, Bluetooth 5.0, ZigBee 3.0, etc.
- Built in with multiple sensors
- Android 12 OS
- Intercom, ZigBee gateway, and smart home control panel in one device
- Compatible with various third-party devices and platforms

Basic Information

- Model Number: PHX1-KNX-EU
- Power Supply: 12~24VDC
- I/O: 0~5VDC digital input x1
- 4A 100~240VAC/gang dry contact x2
- Operation System: Android 12
- RAM/ROM: 4GB/32GB
- Wi-Fi: WiFi6, @2.4GHz/5GHz
- Bluetooth: Bluetooth 5.0
- Ethernet Port: 1xRJ45, 10/100Mbps adaptive
- ZigBee: ZigBee 3.0
- Microphone: Dual microphones
- Speaker: Dual speakers
- Camera: 5-megapixel camera with privacy shutter

Sensors Built In

- Gesture Recognition Sensor: Support
- Proximity Sensor: 30~100cm
- Light Sensor: Low-level lux detection
- Temperature Sensor: ±1°C, range: -10°C~50°C
- Humidity Sensor: ±5%, range: 10%~90%RH, without condensation
- Working Temperature: -10°C~50°C
- Storage Temperature: -20°C~70°C

Appearance

- Material: Metal frame
- Screen: 12.35" multi-touch screen
- Screen Resolution: 2560×1600 pixels
- Screen Brightness: 400 cd/m²

Working Environment

- Environment: For indoor use only
- Working Humidity: 10%~90%RH, without condensation

Installation

- Installation: Wall flush mounting
- Flush Mounted Module: EU/UK standard

Application Scenario

- Villas
- Apartment complexes
- Home automation systems
- Modern interiors

HYPANEL ULTRA



At a Glance

- 10.36 inch touch screen with metal frame
- 2K (2000×1200) UHD display
- Built in with 2 channels dry contact, 1 digital input
- Multi networks supported: Wi-Fi 6, Bluetooth 5.0, ZigBee 3.0, etc.
- Built in with multiple sensors
- Android 12 OS
- Intercom, ZigBee gateway, and smart home control panel in one device
- Compatible with various third-party devices and platforms

Basic Information

- Model Number: PH81-KNX-EU
- Power Supply: 12~24VDC
- I/O: 0~5VDC digital input x1
- 4A 100~240VAC/gang dry contact x2
- Operating System: Android 12
- RAM/ROM: 4GB/32GB
- Wi-Fi: WiFi6, @2.4GHz/5GHz
- Bluetooth: Bluetooth 5.0
- Ethernet Port: 1xRJ45, 10/100Mbps adaptive
- ZigBee: ZigBee 3.0
- Microphone: Dual microphones
- Speaker: Dual speakers
- Product Dimension: 245×156×10mm

Sensors Built In

- Proximity Sensor: 30~60cm
- Light Sensor: Low-level lux detection
- Temperature Sensor: ±1°C, range: -10°C~50°C
- Humidity Sensor: ±5%, range: 10%~90%RH, without condensation
- Working Temperature: -10°C~50°C
- Storage Temperature: -20°C~70°C

Appearance

- Material: Metal frame
- Screen: 10.36" multi-touch screen
- Screen Resolution: 2000×1200 pixels
- Screen Brightness: 360 cd/m²

Working Environment

- Environment: For indoor use only
- Working Humidity: 10%~90%RH, without condensation

Installation

- Installation: Wall flush mounting
- Flush Mounted Module: EU/UK standard

Application Scenario

- Villas
- Apartment complexes
- Home automation systems
- Modern interiors

HYPANEL PRO



At a Glance

- 8-inch touchscreen
- Metal frame with a decorative strip available in various colors and textures
- Built in with 2 channels dry contact, 1 digital input
- Built in with multiple sensors
- Support infrared remote control
- Android 10 OS powered by a high-performance Qualcomm chip
- Intercom, ZigBee gateway, and smart home control panel in one device

Basic Information

- Model Number: PG71N-KNX-EU
- Power Supply: KNX 21 ~ 30VDC, AUX 21 ~ 30VDC
- I/O: 0~5VDC digital input x1 4A
100~240VAC/gang dry contact x2
- Operating System: Android 10
- RAM/ROM: 2GB/16GB
- Wi-Fi: IEEE802.11 b/g/n/ac, @2.4GHz/5GHz
- Bluetooth: Bluetooth 4.2
- Ethernet Port: 1xRJ45, 10/100Mbps adaptive
- ZigBee: ZigBee 3.0
- Infrared Remote Control: Support
- Microphone: Dual microphones, -38dBV
- Speaker: Single speaker, 6Ω/1.8W

Sensors Built In

- Proximity Sensor: 30 ~ 60cm
- Light Sensor: Low-level lux detection
- Temperature Sensor: ±1°C, range: -10 ~ 50°C
- Humidity Sensor: ±5%, range: 10 ~ 90%RH, without condensation

Appearance

- Material: Metal
- Screen: 8" multi-touch screen, AF hydrophobic anti-pollution fingerprint proof coating
- Screen Resolution: 1280x800 pixels
- Screen Brightness: 310 cd/m²

Working Environment

- Environment: For indoor use only
- Working Humidity: 10 ~ 90%RH, without condensation

Installation

- Installation: Wall flush mounting
- Flush Mounted Module: EU/UK standard

Application Scenario

- Villas
- Apartment complexes
- Home automation systems
- Modern interiors

HYPANEL LUX



At a Glance

- 2.1-inch touch screen with 4 AG-glass physical buttons
- Infinite metal knobs with damping and ratchet mode
- Light ring with more than 16 million colors
- Various sensors and Infrared remote control built-in
- Support horizontal and vertical installation adaptive
- Android 10 system powered by a high-powered Qualcomm chip
- Smart intercom, ZigBee gateway, home automation ALL IN ONE
- Built in with a 2-gang switch and a digital input port

Basic Information

- Model Number: RT61-KNX-EU
- Power Supply: KNX 2130VDC, AUX 2130VDC
- I/O Port: 05VDC Digital input x1, 100240VAC relay x2
- Operating System: Android 10
- RAM/ROM: 1GB/8GB
- Wi-Fi: IEEE802.11 b/g/n, @2.4GHz/5GHz
- Bluetooth: Bluetooth 4.2
- Ethernet Port: 1xRJ45, 10/100Mbps adaptive
- ZigBee: ZigBee 3.0
- Infrared Remote Control: Support
- Microphone: Dual microphones, -42dBV
- Speaker: Dual speakers, 8Ω/1.5W

Sensors Built In

- Proximity Sensor: 30 ~ 60cm
- Light Sensor: Low-level lux detection
- Temperature Sensor: ±1°C, range: -10 ~ 55°C
- Humidity Sensor: ±5%, range: 10 ~ 90%RH, without condensation
- Gravity Sensor: 3-axis
- Working Temperature: -10 ~55°C
- Storage Temperature: -30 ~70°C

Appearance

- Material: V0 fireproof PC + 4 AG glass buttons + 1 metal knob
- Screen: 2.1" multi-touch screen
- Screen Resolution: 480x480 pixels
- Screen Brightness: 210 cd/m²

Working Environment

- Environment: For indoor use only
- Working Humidity: 10 ~ 90%RH, without condensation

Installation

- Installation: Wall flush mounting
- Flush Mounted Module: EU/UK standard

Application Scenario

- Villas
- Apartment complexes
- Home automation systems
- Modern interiors

HYPANEL LUX



Basic Information

- Model Number: CT61-PoE
- Power Supply: IEEE802.3af PoE
- Operating System: Android 12
- RAM/ROM: 2GB/8GB
- Ethernet Port: 1×RJ45, 10/100Mbps adaptive
- Microphone: Dual microphones, -26dBFS
- Speaker: Single speaker, 8Ω/1.5W

Sensors Built In

- Proximity Sensor: 30 ~ 60cm
- Light Sensor: Low-level lux detection

Appearance

- Material: Metal
- Screen: 2.1" multi-touch screen
- Screen Resolution: 480×480 pixels
- Screen Brightness: 210 cd/m²

At a Glance

- 2.1-inch touch screen
- Infinite pressable metal knob for ultimate interaction
- Light ring with more than 16 million colors
- Various sensors built-in
- Android 12 system powered by a high-powered Rockchip chip
- Smart intercom, home automation ALL IN ONE

Working Environment

- Environment: For indoor use only
- Working Humidity: 10 ~ 90%RH, without condensation
- Working Temperature: -10 ~ 50°C
- Storage Temperature: -30 ~ 70°C

Installation

- Installation: Special wall box installation
- Flush Mounted Module: Special standard

Application Scenario

- Villas
- Apartment complexes
- Home automation systems
- Modern interiors

HYPANEL KEYPLUS



Basic Information

- Model Number: KS53-R2-EU
- Power Supply: 180 ~ 260VAC, 50Hz
- Output: 2-gang, 1200W total;
- 800W/gang for resistive
- 400W/gang for LED/CFL
- Operating System: Android 13
- RAM/ROM: 2GB/8GB
- Wi-Fi: WiFi6, IEEE 802.11a/b/g/n/ac/ax
- Bluetooth: Bluetooth 5.3
- ZigBee: ZigBee 3.0
- Microphone: Dual microphones, -26dBFS
- Speaker: Single speaker, 8Ω/1.5W

Sensors Built In

- Proximity Sensor: 30 ~ 60cm
- Light Sensor: Low-level lux detection

Appearance

- Material: V0 fireproof PC
- Button: 6 touch buttons
- Screen: 4" multi-touch screen
- Screen Resolution: 480×480 pixels
- Screen Brightness: 210 cd/m²

At a Glance

- Excellent performance with Android 13 system
- 4" multi-touch screen with energy-saving mode
- 6 touch buttons, suitable for the whole family
- 2-gang relay, can be connected to lights directly
- Smart intercom, ZigBee gateway, home automation ALL IN ONE
- EU standard flush mounted box

Working Environment

- Environment: For indoor use only
- Working Humidity: 10 ~ 90%RH, without condensation
- Working Temperature: -10 ~ 55°C
- Storage Temperature: -30 ~ 70°C

Installation

- Installation: Wall flush mounting
- Flush Mounted Module: EU standard
- Wiring Way: L+ and N- wire required

Application Scenario

- Villas
- Apartment complexes
- Home automation systems
- Modern interiors

HYPANEL PLUS



Basic Information

- Model Number: PS52N-R2-EU
- Power Supply: 180~260VAC, 50Hz
- Operating System: Android 10
- RAM/ROM: 2GB/8GB
- Wi-Fi: IEEE 802.11a/b/g/n/ac/ax @ 2.4G/5G
- Bluetooth: Bluetooth 5.3
- Ethernet Ports: 1xRJ45, 10/100Mbps adaptive
- ZigBee: ZigBee 3.0
- Output: 2-gang, 1200W total;
- 800W/gang for resistive
- 400W/gang for LED/CFL
- Microphone: Dual microphone, -42dBV
- Speaker: Single speaker, 8Ω/1.5W

Appearance

- Material: V0 fireproof PC
- Button: 2 touch buttons
- Screen: 4" multi-touch screen
- Screen Resolution: 480x480 pixels
- Screen Brightness: 210 cd/m²

At a Glance

- Excellent performance with Android 12 system
- 2 touch buttons, suitable for the whole family
- 4" multi-touch screen with energy-saving mode
- 2-gang switch, replaces conventional switch
- Smart intercom, ZigBee gateway, home automation ALL IN ONE
- Various sensors built-in

Sensors Built In

- Proximity Sensor: 30~60cm
- Light Sensor: Low-level lux detection
- Temperature Sensor: ±1°C, range: -10°C~55°C
- Humidity Sensor: ±5%, range: 10%~90%RH, without condensation

Working Environment

- Environment: For indoor use only
- Working Humidity: 10%~90%RH, without condensation
- Working Temperature: -10°C~+55°C
- Storage Temperature: -30°C~+70°C

Installation

- Installation: Wall flush mounting
- Flush Mounted Module: EU/UK standard
- Wiring Way: L+ and N- wire required

Application Scenario

- Villas
- Apartment complexes
- Home automation systems
- Modern interiors

HYPANEL



Basic Information

- Model Number: PS51-KNX-EU
- Power Supply: KNX 2130VDC, AUX 2130VDC
- I/O Port: 05VDC Digital input x1, 100240VAC relay x2
- Operating System: Android 10
- RAM/ROM: 1GB/8GB
- Wi-Fi: IEEE802.11 b/g/n, @2.4GHz/5GHz
- Bluetooth: Bluetooth 4.2
- Ethernet Port: 1xRJ45, 10/100Mbps adaptive
- ZigBee: ZigBee 3.0
- Microphone: Dual microphones, -42dBV
- Speaker: Single speaker, 8Ω/1.5W

Appearance

- Material: V0 fireproof PC
- Screen: 4" multi-touch screen
- Screen Resolution: 480x480 pixels
- Screen Brightness: 210 cd/m²

At a Glance

- Excellent performance with Android 10 system
- 4" multi-touch screen with energy-saving mode
- Smart intercom, ZigBee gateway, home automation ALL IN ONE
- Various sensors built-in
- Standard flush mounted box
- Built-in with a 2-gang switch and a digital input port

Sensors Built In

- Proximity Sensor: 30 ~ 60cm
- Light Sensor: Low-level lux detection
- Temperature Sensor: ±1°C, range: -10~55°C
- Humidity Sensor: ±5%, range: 10~90%RH, without condensation

Working Environment

- Environment: For indoor use only
- Working Humidity: 10 ~ 90%RH, without condensation
- Working Temperature: -10 ~ 55°C
- Storage Temperature: -20 ~ 65°C

Installation

- Installation: Wall flush mounting
- Flush Mounted Module: EU/UK standard

Application Scenario

- Villas
- Apartment complexes
- Home automation systems
- Modern interiors



Experience Smarter Connections



+971 50 579 3191



info@axys-connect.com



UAE Address: Office No. 518, Office Court Building, Opposite Oud Metha Metro Station, Dubai, UAE PO Box: 29684



www.axys-connect.com