



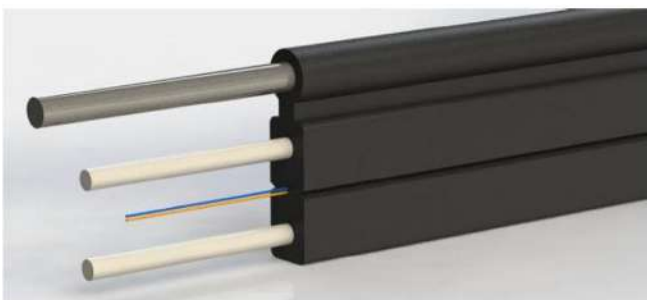
TECHNICAL DATA SHEET

SINGLE MODE G.657 FTTH DROP CABLE OUTDOOR

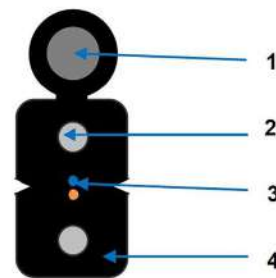
CABLE CONSTRUCTION

Cable Type	01 FIBER / 2FIBER DROP CABLE OUTDOOR
Fiber Count	1 Fiber / 2 Fiber
Fiber Type	Single Mode Fiber as per ITU-T G.657
Fiber Color	Any color out of 12 available colors
Strength Member	FRP (Fiber Reinforced Plastic) 2 x Parallel Robust strength members are placed at two sides
Strength Member	Zinc Coated Steel Wire
Outer Sheath (Material)	Low Smoke Zero Halogen (LSZH)
Outer Sheath (Color)	Black
Outer Diameter of Cable	2.0 ± 0.2mm x 5.0 ± 0.2mm (Nominal)
Outer Sheath Printing	Litech Pakistan (Private) Limited = 1F FTTH DROP OFC = Year of Mfg = Length Marking Litech Pakistan (Private) Limited = 2F FTTH DROP OFC = Year of Mfg = Length Marking
Cable Weight	18 kg/km (Maximum)
Packing	Suitable Strong Reel
Cutting Length	2000 Meter ± 5%

CROSS SECTIONAL DRAWING



Picture is for reference only.



Technical Characteristics

- Low Weight
- Easy to install & joint
- Flame Retardant Low Smoke Zero Halogen Sheath

Construction:

1. Zinc Coated Wire
2. Strength Member (FRP)
3. SM G.657 Fiber
4. Outer Sheath (LSZH)

FIBER PROPERTIES

Item	Offered Specification
Fiber Type	Single Mode ITU-T G.657
Cladding Diameter	125 ± 1 μm
Primary Coating Diameter	250 ± 15.0 μm
Core/Clad Concentricity Error	≤ 0.8 μm
Cladding Non-Circularity	≤ 2%
Mode Field Diameter	8.6 to 9.5 ± 0.7H1
Attenuation Coefficient	
	@ 1310 nm ≤ 0.40 dB/Km (Max)
	@ 1550 nm ≤ 0.30 dB/Km (Max)
Chromatic Dispersion	≤ 3.5 ps(nm.km) @ 1330nm ≤ 18 ps(nm.km) @ 1550nm
Polarized Mode Dispersion (PMD)	≤ 0.2 ps/km

MECHANICAL & ENVIRONMENTAL CHARACTERISTICS

S. No.	Item	Values
01.	Temperature Range Operating Temperature Installation Temperature Storage & Transportation	-20 °C to + 70 °C -10 °C to + 50 °C -20 °C to + 70 °C
02.	Tensile Strength	≤ 100N (Maximum)
03.	Crush Resistance	50N/10cm (Maximum)
04.	Cable Bending Test	30mm (Dynamic) 15mm (Static)

Note: All Mechanical & Environmental Test Shall be Conducted as per IEC-60794 Standard#